



SNCG Mouse Monoclonal Antibody

E10-20084

Background: SNCG(also designated gamma-synuclein or breast cancer-specific protein 1),with 127-amino acid protein(about 14kDa), belongs to the synuclein family, which also includes alpha- and beta- synuclein.Three synucleins are located in the neuronal cytosol and enriched in presynaptic terminals,while SNCG is also expressed in many other non-neuronal tissues. SNCG is abnormally expressed in a high percentage of tumor tissues of diversified cancer types, including liver, esophagus, colon, gastric, lung, prostate, cervical, and breast cancer, but rarely expressed in tumor-matched nonneoplastic adjacent tissues. High levels of SNCG have been identified in advanced breast carcinomas suggesting a correlation between overexpression of SNCG and breast tumor development.

Catalog Number: E10-20084

Amount: 100µg/100µl

Clone Number: 1H10D2

Species: Mouse IgG1

Aliases: SR; BCSG1

Entrez Gene: 6623

Immunogen: Purified recombinant fragment of SNCG expressed in E. Coli.

Storage: Store at 4°C, for long term storage, store at -20°C

Formulation: Purified antibody in PBS containing 0.03% sodium azide.

Species Reactivities: Human

Tested Applications: WB, IHC, ELISA. Not yet tested in other applications. Determining optimal working dilutions by titration test.

Application notes: WB.1/500 - 1/2000, IHC.1/200 - 1/1000,ELISA. Propose dilution 1/10000.

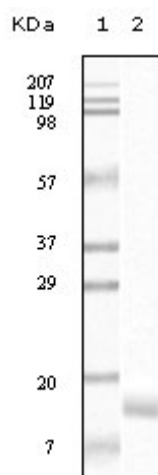


Figure 1. Western blot analysis using SNCG mouse mAb against truncated SNCG recombinant protein.

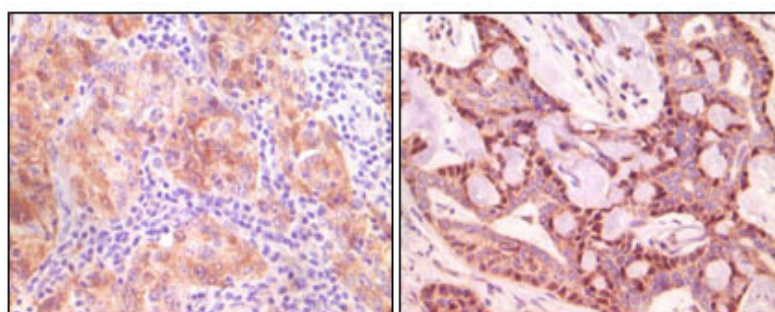


Figure 2. Immunohistochemical analysis of paraffin-embedded human ovary carcinoma (left) and breast carcinoma (right), showing cytoplasmic(ovary carcinoma) localization, cytoplasmic and nuclear (breast carcinoma) localization using SNCG mouse mAb with DAB staining.

For Research Use Only