



## Desmin Mouse Monoclonal Antibody

E10-20094

**Background:** Desmin (DES), with 470-amino acid protein (about 52kDa), belongs to the intermediate filament family and Desmin is class III intermediate filaments found in muscle cells. Homopolymers of Desmin form a stable intracytoplasmic filamentous network connecting myofibrils to each other and to the plasma membrane. Mutations in Desmin are associated with desmin-related myopathy, a familial cardiac and skeletal myopathy (CSM), and with distal myopathies. Desmin is also expressed in smooth muscle cells of both airways and alveolar ducts and Desmin is a load-bearing protein that stiffens the airways and consequently the lung and modulates airway contractile response.

**Catalog Number:** E10-20094

**Amount:** 100µg/100µl

**Clone Number:** 10H7D2

**Species:** Mouse IgG1

**Aliases:** Desmin

**Entrez Gene:** 1674

**Immunogen:** Purified recombinant fragment of Desmin expressed in E. Coli.

**Storage:** Store at 4°C, for long term storage, store at -20°C

**Formulation:** Purified antibody in PBS containing 0.03% sodium azide.

**Species Reactivities:** Human

**Tested Applications:** WB, IHC, ELISA. Not yet tested in other applications. Determining optimal working dilutions by titration test.

**Application notes:** WB. 1/500 - 1/2000, IHC. 1/200 - 1/1000, ELISA. Propose dilution 1/10000.

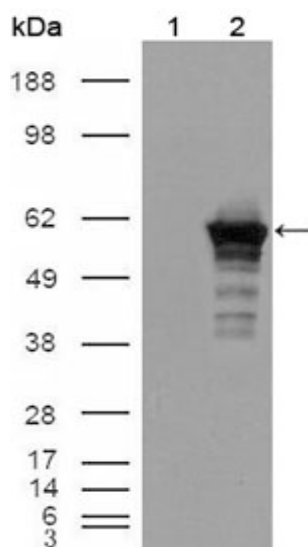


Figure 1. Western blot analysis using Desmin mouse mAb against HEK293T cells transfected with the pCMV6-ENTRY control (1) and pCMV6-ENTRY Desmin cDNA (2).

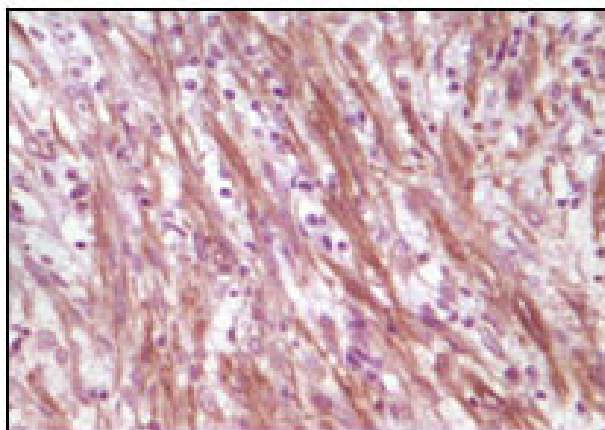


Figure 2. Immunohistochemical analysis of paraffin-embedded human smooth muscle sarcoma, showing cytoplasmic localization using Desmin mouse mAb with DAB staining.