



S100A1 Mouse Monoclonal Antibody

E10-20119

Background: S100 calcium binding protein A1 (S100-alpha/ S100A1), it is a member of the S100 family of proteins containing 2 EF-hand calcium-binding motifs. S100 proteins are localized in the cytoplasm and/or nucleus of a wide range of cells, and involved in the regulation of a number of cellular processes such as cell cycle progression and differentiation. S100 genes include at least 13 members which are located as a cluster on chromosome 1q21. This protein may function in stimulation of Ca²⁺-induced Ca²⁺ release, inhibition of microtubule assembly, and inhibition of protein kinase C-mediated phosphorylation. Reduced expression of this protein has been implicated in cardiomyopathies.

Catalog Number: E10-20119

Amount: 100µg/100µl

Clone Number: 2C8B8, 2C8E8, 3C8D8

Species: Mouse IgG1

Aliases: S100; S100A; S100-alpha; S100A1

Entrez Gene: 6271

Immunogen: Purified recombinant fragment of S100A1 expressed in E. Coli.

Storage: Store at 4°C, for long term storage, store at -20°C

Formulation: Ascitic fluid containing 0.03% sodium azide.

Species Reactivities: Human

Tested Applications: WB, IHC, ELISA. Not yet tested in other applications. Determining optimal working dilutions by titration test.

Application notes: WB.1/500 - 1/2000, IHC.1/200 - 1/1000, ELISA. Propose dilution 1/10000.

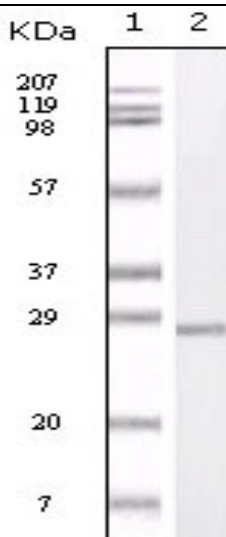


Figure 1. Western blot analysis using S100A mouse mAb against truncated S100A recombinant protein.

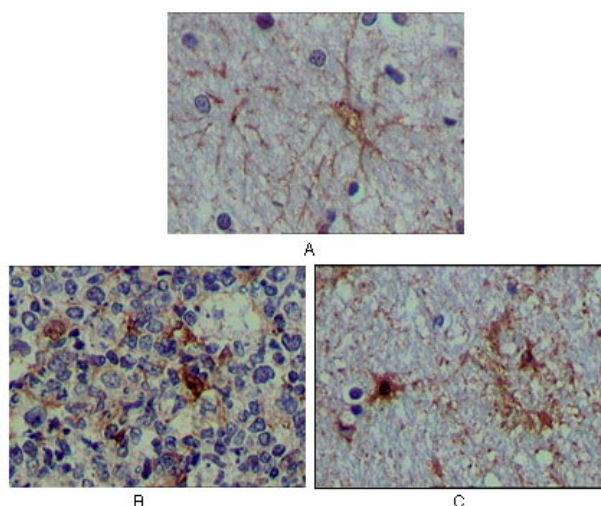


Figure 2. Immunohistochemical analysis of paraffin-embedded human brain tissue (A), lymphoid follicles tissue (B) and interbrain tissue (C), showing cytoplasmic localization using S100A mouse mAb with DAB staining.

For Research Use Only