



S100A10/P11 Mouse Monoclonal Antibody

E10-20120

Background: S100 calcium binding protein A10 (S100A10/P11), it is a member of the S100 family of proteins containing 2 EF-hand calcium-binding motifs. S100 proteins are localized in the cytoplasm and/or nucleus of a wide range of cells, and involved in the regulation of a number of cellular processes such as cell cycle progression and differentiation. S100 genes include at least 13 members which are located as a cluster on chromosome 1q21. This protein may function in exocytosis and endocytosis.

Catalog Number: E10-20120

Amount: 100µg/100µl

Clone Number: 4E7E10

Species: Mouse IgG1

MW: 11kDa

Aliases: S100A10; P11; PP11; PRSS26

Entrez Gene: 6281

Immunogen: Purified recombinant fragment of human P11 expressed in E. Coli.

Storage: Store at 4°C, for long term storage, store at -20°C

Formulation: Ascitic fluid containing 0.03% sodium azide.

Species Reactivities: Human

Tested Applications: WB, IHC, IF, ELISA. Not yet tested in other applications. Determining optimal working dilutions by titration test.

Application notes: WB.1/500 - 1/2000, IHC.1/200 - 1/1000, IF.1/200 - 1/1000, ELISA. Propose dilution 1/10000.

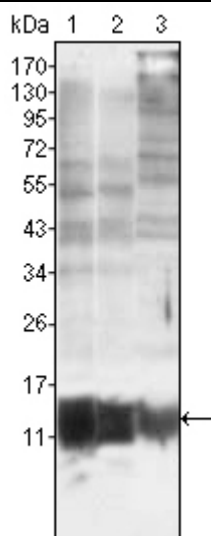


Figure 1. Western blot analysis using S100A10/P11 mouse mAb against MCF-7 (1), HepG2 (2) and Hela (3).

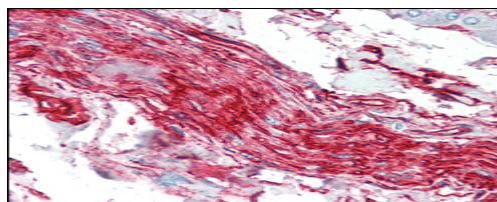


Figure 2. Immunohistochemical analysis of paraffin-embedded human nerve and ganglion cells using S100A10/P11 mouse mAb.

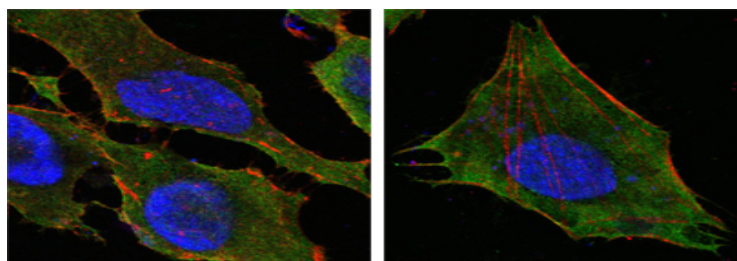


Figure 3. Confocal immunofluorescence analysis of Hela (left) and L-02 (right) cells using S100A10/P11 mouse mAb (green). Red. Actin filaments have been labeled with DY-554 phalloidin. Blue. DRAQ5 fluorescent DNA dye.

For Research Use Only