



ABL2 Mouse Monoclonal Antibody

E10-20125

Background: ABL2(ARG, Abelson-related gene) is a cytoplasmic tyrosine kinase which is closely related to but distinct from ABL1. The similarity of the proteins includes the tyrosine kinase domains and extends amino-terminal to include the SH2 and SH3 domains. ABL2 is expressed in both normal and tumor cells. The ABL2 gene product is expressed as two variants bearing different amino termini, both approximately 12-kb in length. c-Abl shows both cytoplasmic and nuclear localization, c-Abl is involved in two different chromosomal translocations present in human leukemias, which generate Bcr-Abl and TEL-Abl.

Catalog Number: E10-20125

Amount: 100µg/100µl

Clone Number: 1H1B11

Species: Mouse IgG1

Aliases: ARG; ABLL; FLJ22224; FLJ31718; FLJ41441

Entrez Gene: 27

Immunogen: Purified recombinant fragment of ABL2 expressed in E. Coli.

Storage: Store at 4°C, for long term storage, store at -20°C

Formulation: Ascitic fluid containing 0.03% sodium azide.

Species Reactivities: Human

Tested Applications: WB,IHC, ELISA. Not yet tested in other applications. Determining optimal working dilutions by titration test.

Application notes: WB.1/500 - 1/2000 ,IHC.1/200 - 1/1000,ELISA. Propose dilution 1/10000.

KDa 1 2

119
98

57

37

29

20

7



Figure 1. Western blot analysis using ABL2 mouse mAb against truncated ABL2 recombinant protein.

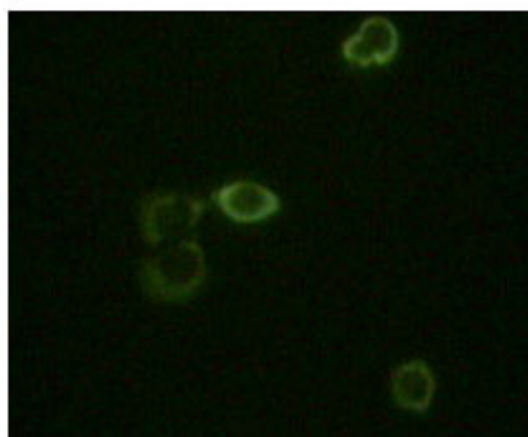


Figure 2. Immunofluorescence staining of methanol-fixed HeLa cells using ABL2 mouse mAb showing cytoplasm localization.

For Research Use Only