



HER-2 Mouse Monoclonal Antibody

E10-20127

Background: The C-erbB-2 (HER-2/neu) gene encodes a member of the epidermal growth factor (EGF) receptor family of receptor tyrosine kinases. Amplification or overexpression of this gene has been reported in numerous cancers, including breast and ovarian tumors. High levels of c-erbB-2 were associated with estrogen receptor (ER) and progesterone receptor negativity. Overexpression of the c-erbB-2 oncogene has been shown to be associated with poor prognosis in ovarian and breast cancer. The level of increased Neu expression can be a predictor of disease prognosis.

Catalog Number: E10-20127

Amount: 100µg/100µl

Clone Number: 9B9D8

Species: Mouse IgG2b

Aliases: HER-2, C-erbB-2, erbB-2

Entrez Gene: 2064

Immunogen: Purified recombinant fragment of HER-2 expressed in E. Coli.

Storage: Store at 4°C, for long term storage, store at -20°C

Formulation: Ascitic fluid containing 0.03% sodium azide.

Species Reactivities: Human

Tested Applications: WB, IHC, ELISA. Not yet tested in other applications. Determining optimal working dilutions by titration test.

Application notes: WB: 1/500 - 1/2000, IHC: 1/200 - 1/1000, ELISA. Propose dilution 1/10000.

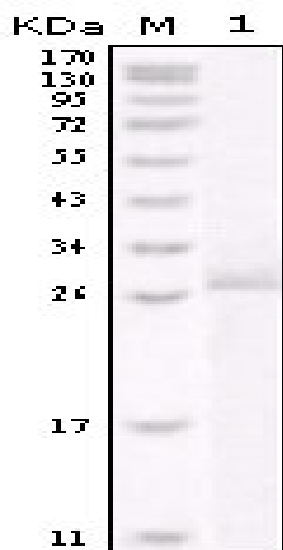


Figure 1. Western blot analysis using HER-2 mouse mAb against truncated HER-2 recombinant protein.

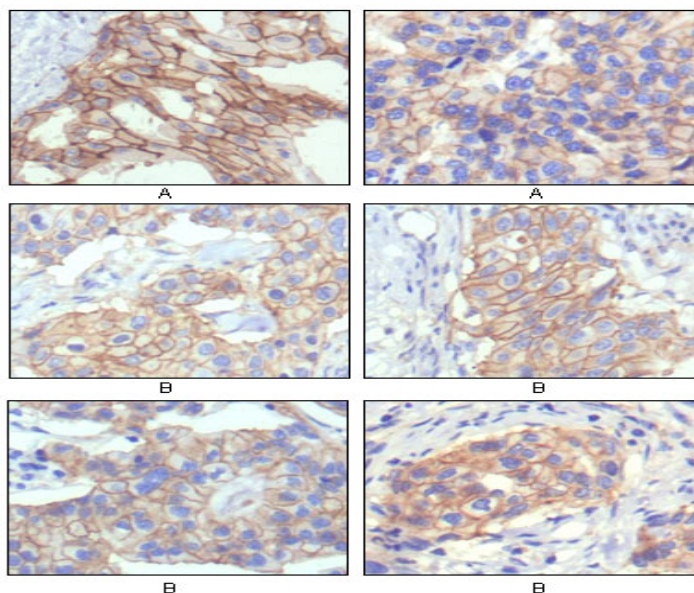


Figure 2. Immunohistochemical analysis of paraffin-embedded human breast intraductal carcinoma tissue(A) and breast infiltrating ductal carcinoma tissue(B) showing membrane localization using HER-2 mouse mAb with DAB staining.

For Research Use Only