



MER Mouse Monoclonal Antibody

E10-20153

Background:

MER (c-mer proto-oncogene tyrosine kinase) is a member of the MER/AXL/TYRO3 receptor kinase family and encodes a transmembrane protein with two fibronectin type-III domains, two Ig-like C2-type (immunoglobulin-like) domains, and one tyrosine kinase domain. MER has been identified as a tyrosine kinase potentially involved in the development of glioblastomas. It is expressed at highest levels in ovary, prostate, lung and kidney. Gas6, a growth arrest specific gene, and the related anticoagulation factor Protein S have been identified as ligands for the UFO family of receptors. Mutations in this gene have been associated with disruption of the retinal pigment epithelium (RPE) phagocytosis pathway and onset of autosomal recessive retinitis pigmentosa (RP).

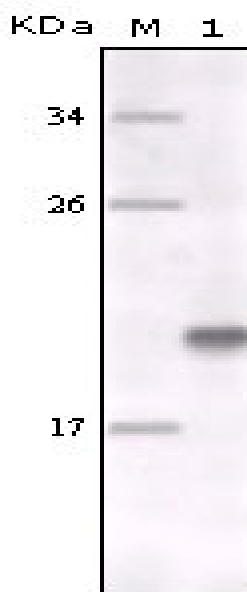
Catalog Number: E10-20153**Amount:** 100µg/100µl**Clone Number:** 7E5G1**Species:** Mouse IgG1**Aliases:** MER; RP38; c-mer; MGC133349; MERTK**Entrez Gene:** 10461**Immunogen:** Purified recombinant fragment of MER expressed in E. Coli.**Storage:** Store at 4 °C for long term storage, store at -20 °C for short term storage.**Formulation:** Ascitic fluid containing 0.03% sodium azide.**Species Reactivities:** Human**Tested Applications:** WB, ELISA. Not yet tested in other applications. Determining optimal working dilutions by titration test.**Application notes:** WB. 1/500 - 1/2000, ELISA. Propose dilution 1/10000.

Figure 1. Western blot analysis using MER mouse mAb against full-length MER recombinant protein.

For Research Use Only