



CD20 Mouse Monoclonal Antibody

E10-20163

Background:

CD20 (MS4A1, membrane-spanning 4-domains, subfamily A, member 1) is a member of the membrane-spanning 4A gene family. Members of this nascent protein family are characterized by common structural features and similar intron/exon splice boundaries and display unique expression patterns among hematopoietic cells and nonlymphoid tissues. The CD20 antigen is present on human pre B lymphocytes and on B lymphocytes at all stages of maturation, except on plasma cells. Low level expression of the CD20 antigen has been detected on normal T lymphocytes. The CD20 molecule is involved in regulation of B cell differentiation, presumably via its reported function as a Ca⁺⁺ channel subunit. And it is known to accelerate the G0 to G1 progression induced by IGF-1.

Catalog Number: E10-20163**Amount:** 100µg/100µl**Clone Number:** 3E9D3C1G3**Species:** Mouse IgG**Aliases:** B1; S7; Bp35; CD20; MS4A2; LEU-16; MGC3969; MS4A1**Entrez Gene:** 931**Immunogen:** Synthetic peptide corresponding to aa (EPANPSEKNPSTQY) of human CD20, conjugated to KLH.**Storage:** Store at 4

For long term storage, store at -20°C

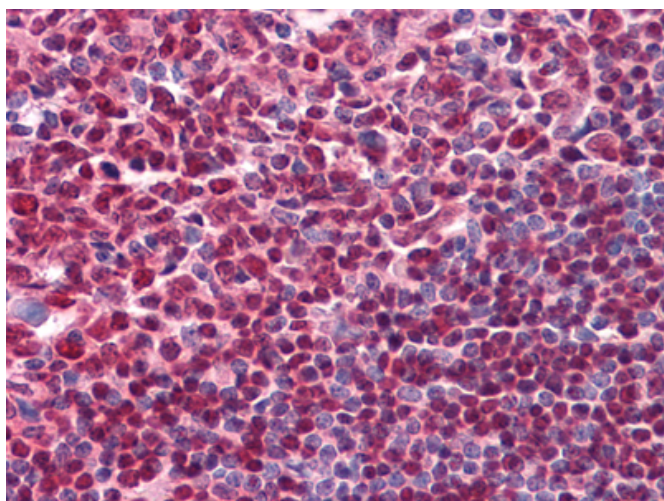
Formulation: Ascitic fluid containing 0.03% sodium azide.**Species Reactivities:** Human**Tested Applications:** IHC ,IF,ELISA. Not yet tested in other applications. Determining optimal working dilutions by titration test.**Application notes:** IHC:1/200 - 1/1000,IF: 1/200 - 1/1000,ELISA: Propose dilution 1/10000.

Figure 1: Immunohistochemical analysis of paraffin-embedded human Tonsil tissues using CD20 mouse mAb.

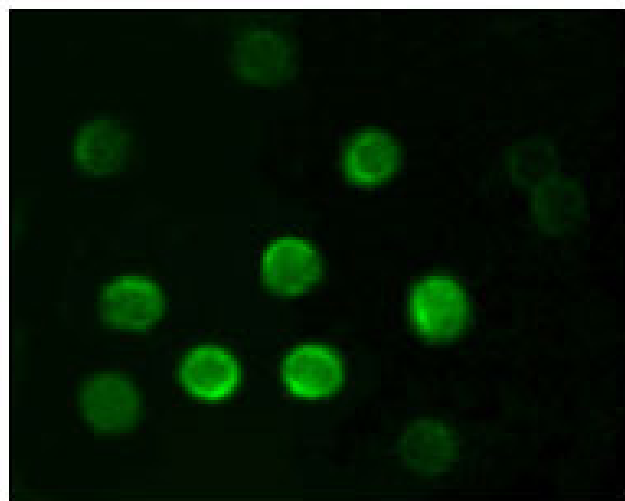


Figure 2: Immunofluorescence analysis of B lymphocytes using CD20 mouse mAb.

For Research Use Only