



MAPK11 Mouse Monoclonal Antibody

E10-20165

Background:

Mitogen-activated protein kinase 11. The protein encoded by this gene is a member of the MAP kinase family. MAP kinases act as an integration point for multiple biochemical signals, and are involved in a wide variety of cellular processes such as proliferation, differentiation, transcription regulation, and development. This kinase is most closely related to p38 MAP kinase, both of which can be activated by proinflammatory cytokines and environmental stress. This kinase is activated through its phosphorylation by MAP kinase kinases (MKKs), preferably by MKK6. Transcription factor ATF2/CREB2 has been shown to be a substrate of this kinase.

Catalog Number: E10-20165

Amount: 100µg/100µl

Clone Number: 4H6H6

Species: Mouse IgG

Aliases: MAPK11

Entrez Gene: 5600

Immunogen: Purified recombinant fragment of MAPK11 (aa251-363) expressed in E. Coli.

Storage: Store at 4 °C for long term storage, store at 20 °C for short term storage.

Formulation: Ascitic fluid containing 0.03% sodium azide.

Species Reactivities: Human

Tested Applications: WB, ELISA. Not yet tested in other applications. Determining optimal working dilutions by titration test.

Application notes: WB. 1/500 - 1/2000, ELISA. Propose dilution 1/10000.

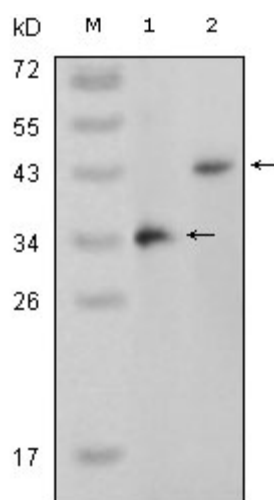


Figure 1. Western blot analysis using MAPK11 mouse mAb against truncated MAPK11 recombinant protein (1) and full-length MAPK11 (aa1-363)-pcDNA3.1 transfected CHO-K1 cell lysate (2).

For Research Use Only