



YES1 Mouse Monoclonal Antibody

E10-20185

Background: YES1, v-yes-1 Yamaguchi sarcoma viral oncogene homolog 1. This gene is the cellular homolog of the Yamaguchi sarcoma virus oncogene. The encoded protein has tyrosine kinase activity and belongs to the src family of proteins. This gene lies in close proximity to thymidylate synthase gene on chromosome 18, and a corresponding pseudogene has been found on chromosome 22.

Catalog Number: E10-20185

Amount: 100µg/100µl

Clone Number: 2F3E6

Species: Mouse IgG1

Aliases: Yes; c-yes; HsT441; P61-YES; YES1

Entrez Gene: 7525

Immunogen: Purified recombinant fragment of YES (aa10-193) expressed in E. Coli.

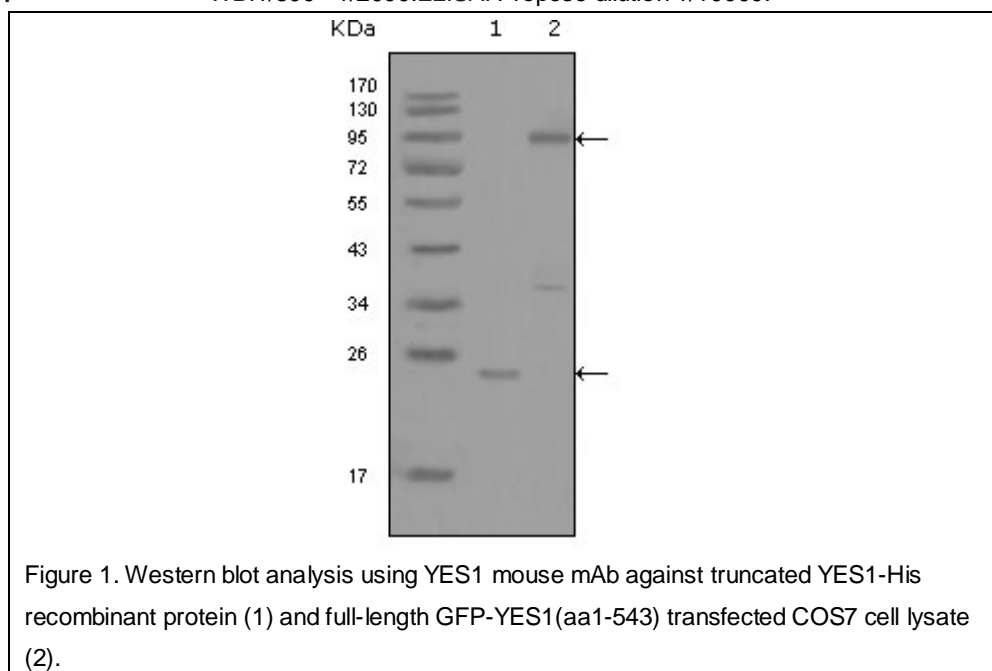
Storage: Store at 4 °C for long term storage, s

Formulation: Ascitic fluid containing 0.03% sodium azide.

Species Reactivities: Human

Tested Applications: WB, ELISA. Not yet tested in other applications. Determining optimal working dilutions by titration test.

Application notes: WB.1/500 - 1/2000.ELISA. Propose dilution 1/10000.



For Research Use Only