



EphB2 Mouse Monoclonal Antibody

E10-20199

Background: EphB2. EPH receptor B2. Ephrin receptors and their ligands, the ephrins, mediate numerous developmental processes, particularly in the nervous system. Based on their structures and sequence relationships, ephrins are divided into the ephrin-A (EFNA) class, which are anchored to the membrane by a glycosylphosphatidylinositol linkage, and the ephrin-B (EFNB) class, which are transmembrane proteins. The Eph family of receptors are divided into 2 groups based on the similarity of their extracellular domain sequences and their affinities for binding ephrin-A and ephrin-B ligands. Ephrin receptors make up the largest subgroup of the receptor tyrosine kinase (RTK) family. The protein encoded by this gene is a receptor for ephrin-B family members.

Catalog Number: E10-20199

Amount: 100µg/100µl

Clone Number: 2D12C6

Species: Mouse IgG2b

Aliases: DRT; ERK; CAPB; Hek5

Entrez Gene: 2048

Immunogen: Purified recombinant fragment of EphB2 (aa17-200) expressed in E. Coli.

Storage: Store at 4 °C for long term storage, store at 20 for 6 months

Formulation: Ascitic fluid containing 0.03% sodium azide.

Species Reactivities: Human

Tested Applications: WB, IF, ELISA. Not yet tested in other applications. Determining optimal working dilutions by titration test.

Application notes: WB.1/500 - 1/2000. IF.1/200 - 1/1000. ELISA. Propose dilution 1/10000.

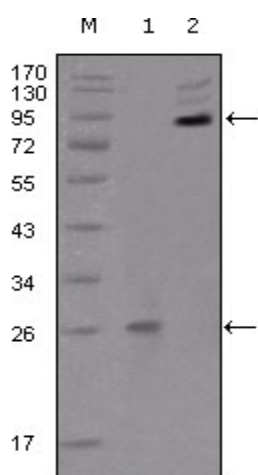


Figure 1. Western blot analysis using EphB2 mouse mAb against truncated EphB2 recombinant protein (1) and extracellular EphB2(aa19-476)-hlgGfc transfected CHO-K1 cell lysate(2).

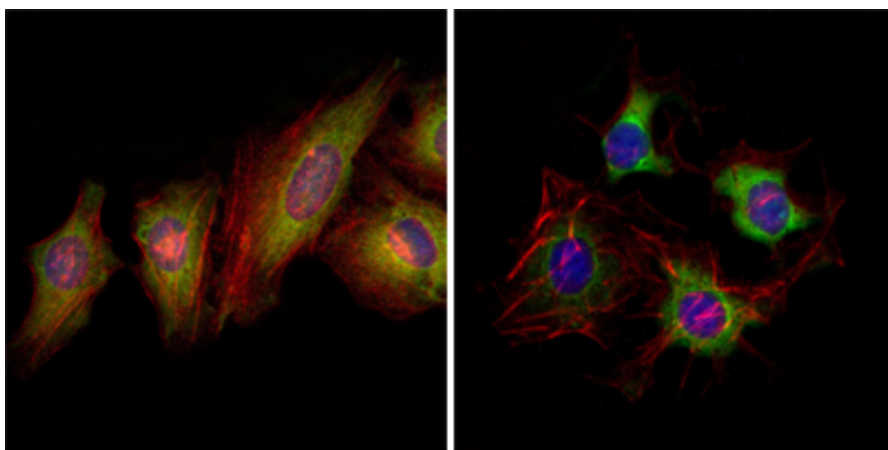


Figure 2. Immunofluorescence analysis of Hela (left) and HepG2 (right) cells using EphB2 mouse mAb (green). Red. Actin filaments have been labeled with DY-554 phalloidin. Blue. DRAQ5 fluorescent DNA dye.

For Research Use Only