



IGFBP2 Mouse Monoclonal Antibody

E10-20204

Background: IGFBP2, insulin-like growth factor binding protein 2. IGFBP2 is a member of the ISGBP family which bind various IGFs. IGFBP2 is overexpressed in a wide spectrum of other cancers, including glioma, prostate cancer, synovial sarcoma, neuroblastoma, colon cancer, adrenocortical cancer, lung cancer, Wilms' tumor, and hepatoblastoma. The overexpression of IGFBP2 also correlates with the aggressiveness of some tumors. IGFBP2 activates the expression of matrix metalloproteinase 2, which contributes to cell invasiveness.

Catalog Number: E10-20204

Amount: 100µg/100µl

Clone Number: 1F6F6

Species: Mouse IgG1

Aliases: IBP2; IGF-BP53

Entrez Gene: 3485

Immunogen: Purified recombinant fragment of protein IGFBP2 (aa180-328) expressed in E. Coli.

Storage: Store at 4 °C for long term storage, store at -20 °C for 1 year

Formulation: Ascitic fluid containing 0.03% sodium azide.

Species Reactivities: Human

Tested Applications: WB, IHC, ELISA. Not yet tested in other applications. Determining optimal working dilutions by titration test.

Application notes: WB. 1/500 - 1/2000. IHC. 1/200 - 1/1000. ELISA. Propose dilution 1/10000.

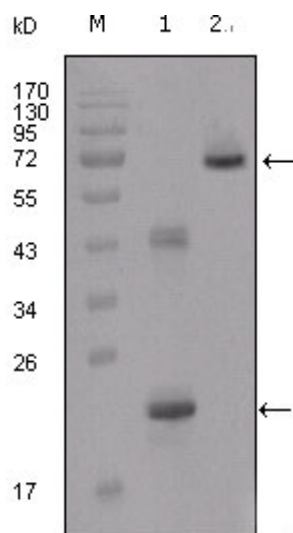


Figure 1. Western blot analysis using IGFBP2 mouse mAb against truncated IGFBP2-His recombinant protein (1) and truncated IGFBP2 (aa40-328)-hlgGfc transfected CHO-K1 cell lysate (2).

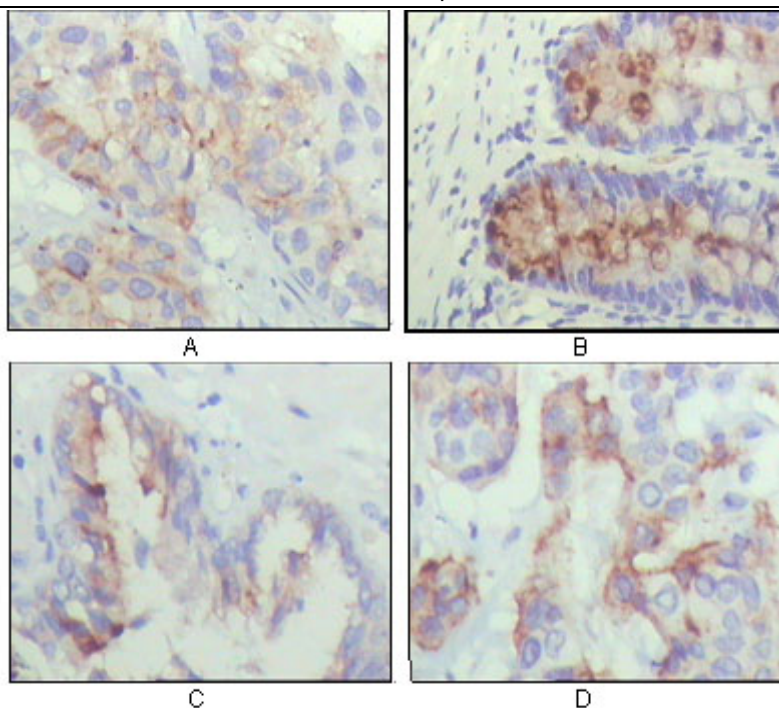


Figure 2. Immunohistochemical analysis of paraffin-embedded human lung cancer (A), rectum (B), prostate (C), colon cancer (D) showing cytoplasmic localization using IGFBP2 mouse mAb with DAB staining.

For Research Use Only