



ALCAM Mouse Monoclonal Antibody

E10-20216

Background: ALCAM(CD166). Activated leukocyte cell adhesion molecule. CD166 is a member of the Ig superfamily and is expressed on activated T-cells, B cells and other cells including thymic epithelial cells, fibroblasts, keratinocytes and neurons. CD6 has been identified as a receptor for CD166.

Catalog Number: E10-20216

Amount: 100µg/100µl

Clone Number: 3F8B12

Species: Mouse IgG2a

Aliases: MEMD; CD166

Entrez Gene: 214

Immunogen: Purified recombinant fragment of ALCAM (aa405-524) expressed in E. Coli.

Storage: Store at 4 °C for long term storage, store at -20 °C for short term storage.

Formulation: Ascitic fluid containing 0.03% sodium azide.

Species Reactivities: Human

Tested Applications: WB ,ELISA. Not yet tested in other applications. Determining optimal working dilutions by titration test.

Application notes: WB.1/500 - 1/2000.ELISA. Propose dilution 1/10000.

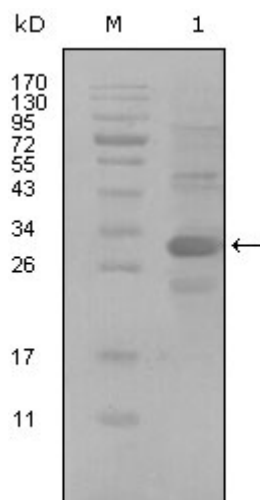


Figure 1. Western blot analysis using ALCAM mouse mAb against truncated Trx-ALCAM recombinant protein (1).

For Research Use Only