



ALCAM Mouse Monoclonal Antibody

E10-20232

Background: ALCAM(CD166): Activated leukocyte cell adhesion molecule. CD166 is a member of the Ig superfamily and is expressed on activated T-cells, B cells and other cells including thymic epithelial cells, fibroblasts, keratinocytes and neurons. CD6 has been identified as a receptor for CD166.

Catalog Number: E10-20232

Amount: 100µg/100µl

Clone Number: 10F1G12

Species: Mouse IgG1

Aliases: MEMD; CD166; ALCAM

Entrez Gene: 214

Immunogen: Purified recombinant fragment of ALCAM (aa405-524) expressed in E. Coli.

Storage: Store at 4 °C for long term storage, store at -20 °C

Formulation: Ascitic fluid containing 0.03% sodium azide.

Species Reactivities: Human

Tested Applications: IHC, ELISA. Not yet tested in other applications. Determining optimal working dilutions by titration test.

Application notes: IHC:1/200 - 1/1000.ELISA: Propose dilution 1/10000.

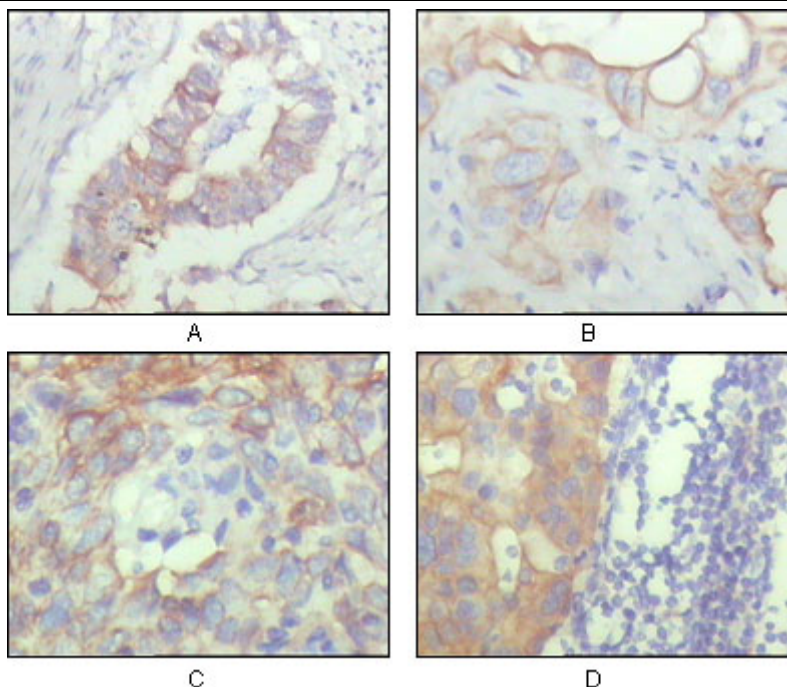


Figure 1: Immunohistochemical analysis of paraffin-embedded human ovary carcinoma (A), kidney carcinoma (B), lung carcinoma (C) and breast carcinoma (D), showing cytoplasmic and membrane localization with DAB staining using ALCAM mouse mAb.

For Research Use Only