



FRK Mouse Monoclonal Antibody

E10-20237

Background:

FRK, fyn-related kinase. The protein encoded by this gene belongs to the TYR family of protein kinases. This tyrosine kinase is a nuclear protein and may function during G1 and S phase of the cell cycle and suppress growth.

Catalog Number: E10-20237

Amount: 100µg/100µl

Clone Number: 1A8H2C12

Species: Mouse IgG1

Aliases: GTK; RAK; PTK5

Entrez Gene: 2444

Immunogen: Purified recombinant fragment of FRK (aa2-300) expressed in E. Coli.

Storage: Store at 4 °C for long term storage, store at -20 °C

Formulation: Ascitic fluid containing 0.03% sodium azide.

Species Reactivities: Human

Tested Applications: WB, IHC, ELISA. Not yet tested in other applications. Determining optimal working dilutions by titration test.

Application notes: WB: 1/500 - 1/2000. IHC: 1/200 - 1/1000. ELISA. Propose dilution 1/10000.

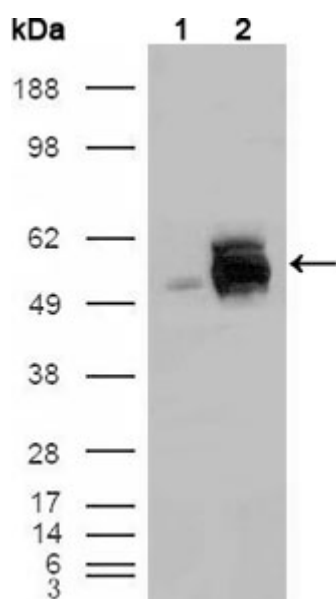


Figure 1. Western blot analysis using FRK mouse mAb against HEK293T cells transfected with the pCMV6-ENTRY control (1) and pCMV6-ENTRY FRK cDNA (2).

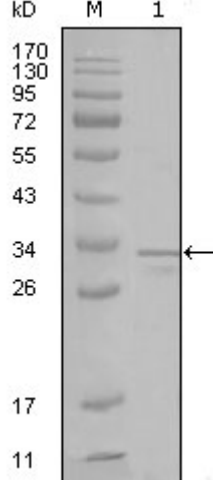


Figure 2. Western blot analysis using FRK mouse mAb against truncated FRK-His recombinant protein (1).

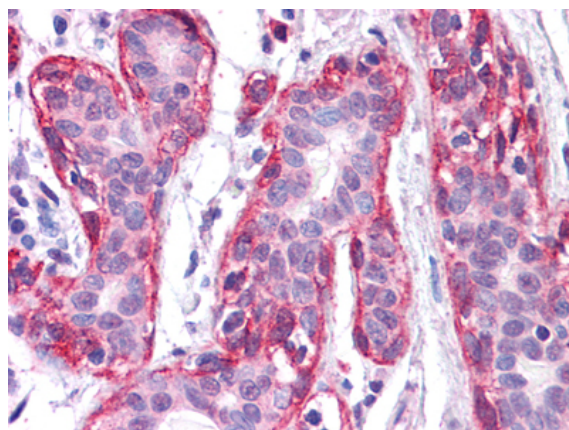


Figure 3. Immunohistochemical analysis of paraffin-embedded human Breast tissues using FRK mouse mAb.