



PARL Mouse Monoclonal Antibody

E10-20241

Background: PARL, presenilin associated, rhomboid-like. This gene encodes a mitochondrial integral membrane protein. Following proteolytic processing of this protein, a small peptide (P-beta) is formed and translocated to the nucleus. This gene may be involved in signal transduction via regulated intramembrane proteolysis of membrane-tethered precursor proteins. Variation in this gene has been associated with increased risk for type 2 diabetes. Alternative splicing results in multiple transcript variants encoding different isoforms.

Catalog Number: E10-20241

Amount: 100µg/100µl

Clone Number: 8C4B2;1H12E10

Species: Mouse IgG2b

Aliases: PSARL; PSARL1; RHBDS1

Entrez Gene: 55486

Immunogen: Purified recombinant fragment of PARL (aa112-167) expressed in E. Coli.

Storage: Store at 4 °C for long term storage, store at 20 °C for short term storage

Formulation: Ascitic fluid containing 0.03% sodium azide.

Species Reactivities: Human

Tested Applications: WB,ELISA. Not yet tested in other applications. Determining optimal working dilutions by titration test.

Application notes: WB.1/500 - 1/2000.ELISA. Propose dilution 1/10000.

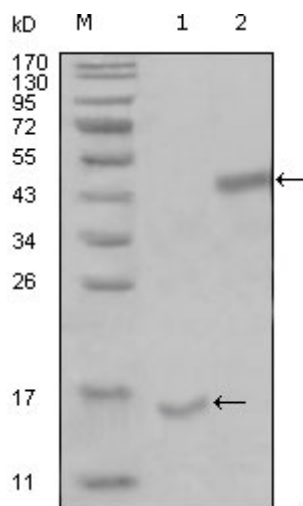


Figure 1. Western blot analysis using PARL mouse mAb against truncated Trx-PARL recombinant protein (1) and truncated MBP-PARL(aa112-167) recombinant protein (2).

For Research Use Only