



AXL Mouse Monoclonal Antibody

E10-20250

Background: AXL. AXL receptor tyrosine kinase. The protein encoded by this gene is a member of the receptor tyrosine kinase subfamily. Although it is similar to other receptor tyrosine kinases, this protein represents a unique structure of the extracellular region that juxtaposes IgL and FNIII repeats. It transduces signals from the extracellular matrix into the cytoplasm by binding growth factors like vitamin K-dependent protein growth-arrest-specific gene 6. It is involved in the stimulation of cell proliferation and can also mediate cell aggregation by homophilic binding. Alternatively spliced transcript variants encoding different isoforms have been identified.

Catalog Number: E10-20250

Amount: 100µg/100µl

Clone Number: 1B3A2

Species: Mouse IgG1

Aliases: UFO; JTK11

Entrez Gene: 558

Immunogen: Purified recombinant fragment of AXL(aa466-530) expressed in E. Coli.

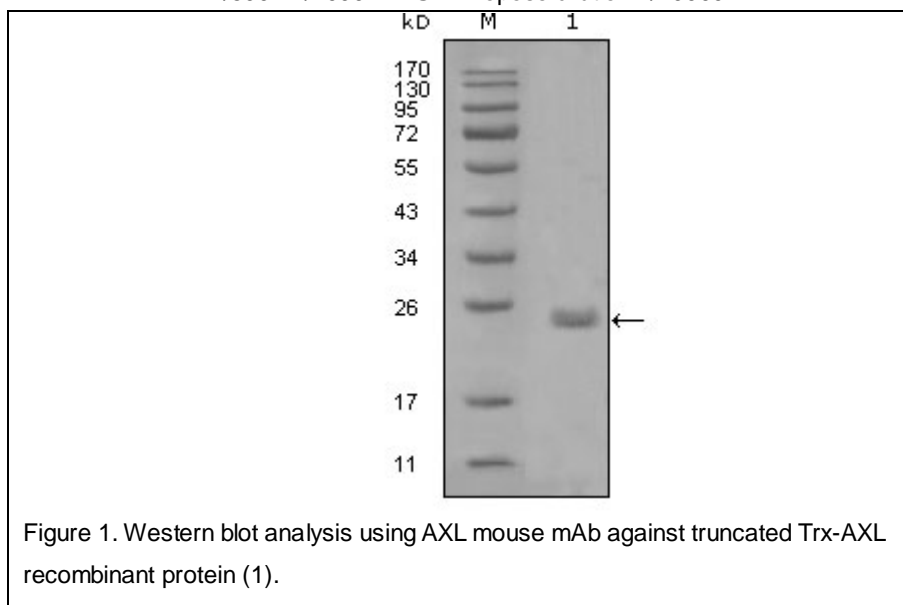
Storage: Store at 4 °C for long term storage, store at -20 °C for short term storage.

Formulation: Ascitic fluid containing 0.03% sodium azide.

Species Reactivities: Human

Tested Applications: WB, ELISA. Not yet tested in other applications. Determining optimal working dilutions by titration test.

Application notes: WB. 1/500 - 1/2000. ELISA. Propose dilution 1/10000.



For Research Use Only