



ERBB3 Mouse Monoclonal Antibody

E10-20254

Background: ERBB3. v-erb-b2 erythroblastic leukemia viral oncogene homolog 3 (avian). This gene encodes a member of the epidermal growth factor receptor (EGFR) family of receptor tyrosine kinases. This membrane-bound protein has a neuregulin binding domain but not an active kinase domain. It therefore can bind this ligand but not convey the signal into the cell through protein phosphorylation. However, it does form heterodimers with other EGF receptor family members which do have kinase activity. Heterodimerization leads to the activation of pathways which lead to cell proliferation or differentiation. Amplification of this gene and/or overexpression of its protein have been reported in numerous cancers, including prostate, bladder, and breast tumors. Alternate transcriptional splice variants encoding different isoforms have been characterized. One isoform lacks the intermembrane region and is secreted outside the cell. This form acts to modulate the activity of the membrane-bound form. Additional splice variants have also been reported, but they have not been thoroughly characterized.

Catalog Number: E10-20254

Amount: 100µg/100µl

Clone Number: 3F10F6

Species: Mouse IgG1

Aliases: HER3; LCCS2

Entrez Gene: 2065

Immunogen: Purified recombinant fragment of ERBB3 (aa1175-1275) expressed in E. Coli.

Storage: Store at 4 °C for long term storage, store at

Formulation: Ascitic fluid containing 0.03% sodium azide.

Species Reactivities: Human

Tested Applications: WB,IHC,ELISA. Not yet tested in other applications. Determining optimal working dilutions by titration test.

Application notes: WB.1/500 - 1/2000.IHC . 1/200 - 1/1000. ELISA. Propose dilution 1/10000.

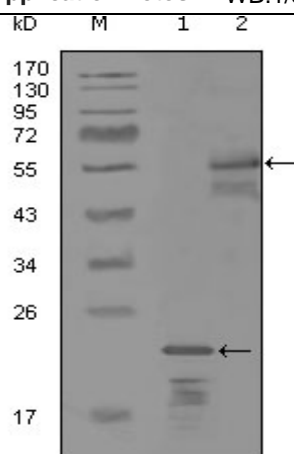


Figure 1. Western blot analysis using ERBB3 mouse mAb against truncated Trx-ERBB3 recombinant protein (1) and MBP-ERBB3 (aa1175-1275) recombinant protein (2).

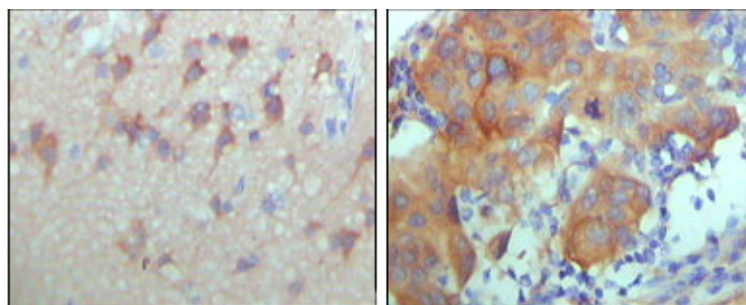


Figure 2. Immunohistochemical analysis of paraffin-embedded human cerebra (left) and breast carcinoma tissue (right), showing cytoplasmic and membrane location with DAB staining using ERBB3 mouse mAb.

For Research Use Only