



EphA7 Mouse Monoclonal Antibody

E10-20275

Background: EphA7. EPH receptor A7. This gene belongs to the ephrin receptor subfamily of the protein-tyrosine kinase family. EPH and EPH-related receptors have been implicated in mediating developmental events, particularly in the nervous system. Receptors in the EPH subfamily typically have a single kinase domain and an extracellular region containing a Cys-rich domain and 2 fibronectin type III repeats. The ephrin receptors are divided into 2 groups based on the similarity of their extracellular domain sequences and their affinities for binding ephrin-A and ephrin-B ligands.

Catalog Number: E10-20275

Amount: 100µg/100µl

Clone Number: 6C8G7

Species: Mouse IgG2b

Aliases: EHK3; HEK11

Entrez Gene: 2045

Immunogen: Purified recombinant fragment of NCOA3 (aa1-200) expressed in E. Coli.

Storage: Store at 4 °C for long term storage, store at -20 °C for short term storage.

Formulation: Ascitic fluid containing 0.03% sodium azide.

Species Reactivities: Human

Tested Applications: WB, IHC, ELISA. Not yet tested in other applications. Determining optimal working dilutions by titration test.

Application notes: WB: 1/500 - 1/2000. IHC: 1/200 - 1/1000. ELISA. Propose dilution 1/10000.

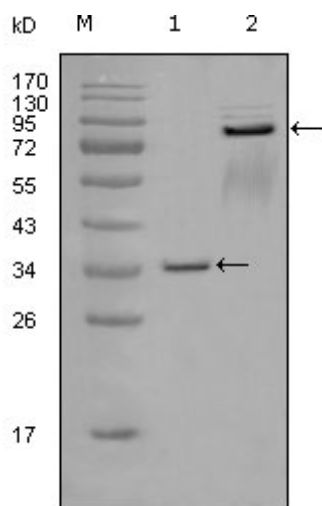


Figure 1. Western blot analysis using EphA7 mouse mAb against truncated GST-EphA7 recombinant protein (1) and truncated EphA7 (aa25-556)-hlgGfc transfected CHOK1 cell lysate (2).

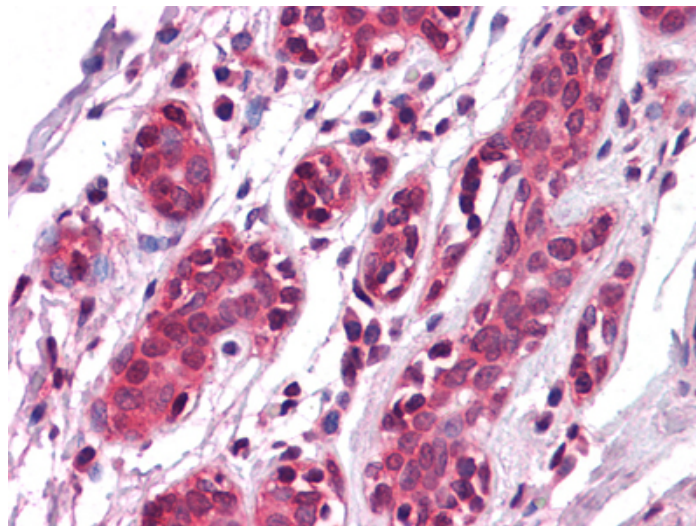


Figure 2. Immunohistochemical analysis of paraffin-embedded human Breast tissues using EPHA7 mouse mAb