



Cytokeratin 8 Mouse Monoclonal Antibody

E10-20280

Background: Cytokeratin 8, also known as CK8, KRT8, K8. Entrez Protein NP_002264. It is a member of the type II keratin family. Type I and type II keratins heteropolymerize to form intermediate-sized filaments in the cytoplasm of epithelial cells. It typically dimerizes with keratin 18 to form an intermediate filament in simple single-layered epithelial cells. This protein plays a role in maintaining cellular structural integrity and also functions in signal transduction and cellular differentiation. Mutations in this gene cause cryptogenic cirrhosis.

Catalog Number: E10-20280

Amount: 100µg/100µl

Clone Number: 8A5D12

Species: Mouse IgG1

MW: 54kDa

Aliases: CK8; CYK8; K2C8; KRT8

Entrez Gene: 3856

Immunogen: Purified recombinant fragment of human Cytokeratin (aa391-483) expressed in E. Coli.

Storage: Store at 4

For long term storage, store at -20°C

Formulation: Ascitic fluid containing 0.03% sodium azide.

Species Reactivities: Human

Tested Applications: WB, IHC, IF, ELISA. Not yet tested in other applications. Determining optimal working dilutions by titration test.

Application notes: WB: 1/500 - 1/2000. IHC: 1/200 - 1/1000. IF: 1/200 - 1/1000. ELISA. Propose dilution 1/10000.

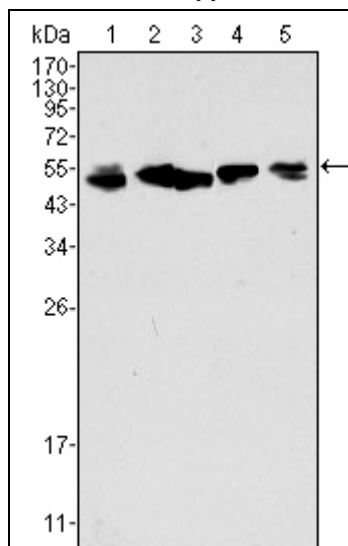


Figure 1. Western blot analysis using CK8 mouse mAb against A549 (1), Hela (2), MCF-7 (3), A431 (4) and HepG2 (5) cell lysate.

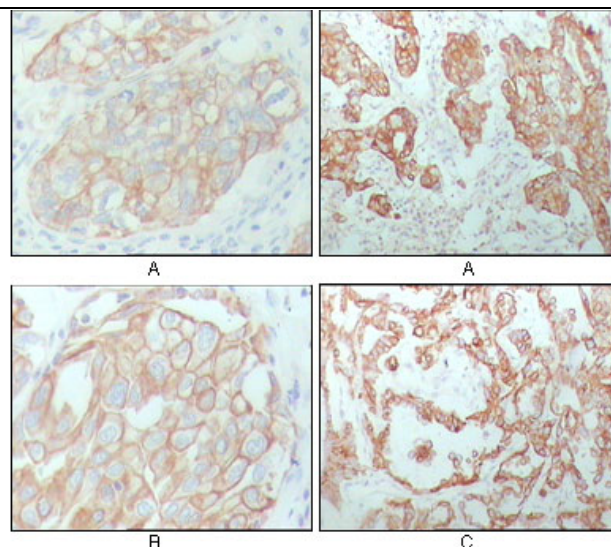


Figure 2. Immunohistochemical analysis of paraffin-embedded human breast carcinoma (A), lung cancer (B) and ovarian cancer tissue (C), showing membrane and cytoplasmic localization with DAB staining using CK8 mouse mAb.

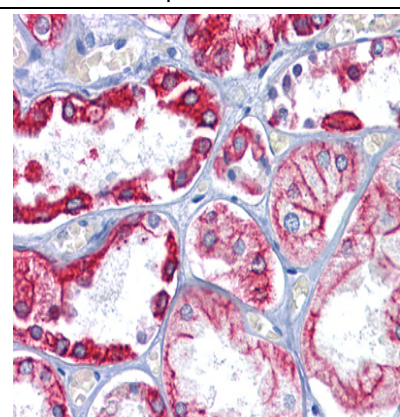


Figure 3. Immunohistochemical analysis of paraffin-embedded human Kidney tissues using CK8 mouse mAb

For Research Use Only