



CD44 Mouse Monoclonal Antibody

E10-20282

Background: CD44, also known as IN, LHRMIC4, CDW44, HCELL. It is a cell-surface glycoprotein involved in cell-cell interactions, cell adhesion and migration. It is a receptor for hyaluronic acid (HA) and can also interact with other ligands, such as osteopontin, collagens, and matrix metalloproteinases (MMPs). This protein participates in a wide variety of cellular functions including lymphocyte activation, recirculation and homing, hematopoiesis, and tumor metastasis. Transcripts for this gene undergo complex alternative splicing that results in many functionally distinct isoforms, however, the full length nature of some of these variants has not been determined. Alternative splicing is the basis for the structural and functional diversity of this protein, and may be related to tumor metastasis.

Catalog Number: E10-20282

Amount: 100µg/100µl

Clone Number: 8E2F3

Species: Mouse IgG1

MW: 82kDa

Aliases: IN; LHR; MC56; MDU2; MDU3; MIC4; Pgp1; CDW44; CSPG8; HCELL

Entrez Gene: 960

Immunogen: Purified recombinant fragment of human CD44 (628-699) expressed in E. Coli.

Storage: Store at 4 °C for long term storage, store at -20 °C for short term storage.

Formulation: Ascitic fluid containing 0.03% sodium azide.

Species Reactivities: Human, Mouse

Tested Applications: WB,IHC,IF, ELISA. Not yet tested in other applications. Determining optimal working dilutions by titration test.

Application notes: WB.1/500 - 1/2000.IHC.1/200 - 1/1000.IF.1/200 - 1/1000.ELISA. Propose dilution 1/10000.

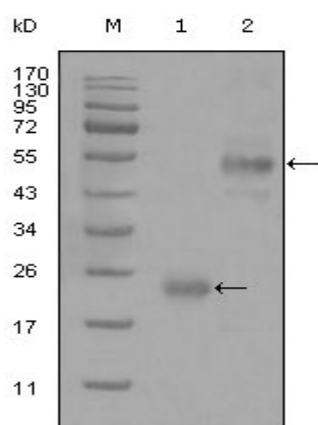


Figure 1. Western blot analysis using CD44 mouse mAb against truncated Trx-CD44 recombinant protein (1) and GST-CD44 (aa628-699) recombinant protein (2).

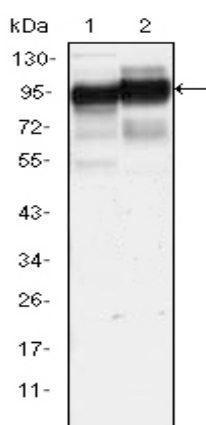


Figure 2. Western blot analysis using CD44 mouse mAb against HeLa (1) and HUVE-12(2) cell lysate.

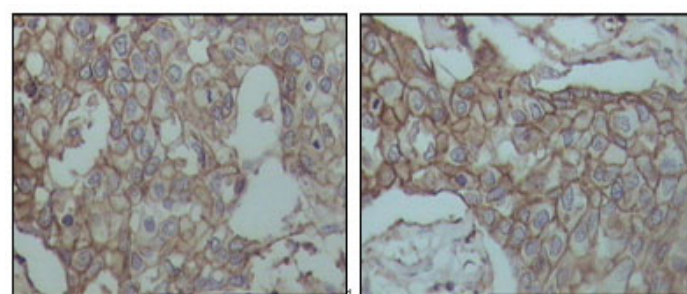


Figure 3. Immunohistochemical analysis of paraffin-embedded human breast carcinoma tissues, showing membrane localization with DAB staining using CD44 mouse mAb.

For Research Use Only