



EphA6 Mouse Monoclonal Antibody

E10-20288

Background: EphA6. EPH receptor A6. The Eph subfamily represents the largest group of receptor protein tyrosine kinases identified to date. While the biological activities of these receptors have yet to be determined, there is increasing evidence that they are involved in central nervous system function and in development. The Eph subfamily receptors of human origin (and their murine/avian homologs) include EphA1(Eph), EphA2 (Eck), EphA3 (Hek4), EphA4 (Hek8), EphA5 (Hek7), EphA6 (Hek12), EphA7 (Hek11/MDK1), EphA8 (Hek3), EphB1 (Hek6), EphB2 (Hek5), EphB3(Cek10, Hek2), EphB4 (Htk), EphB5 (Hek9) and EphB6 (Mep). Ligands for Eph receptors include ephrin-A4 (LERK-4) which binds EphA3 and EphB1. Ephrin-A2(ELF-1) has been described as the ligand for EphA4, ephrin-A3 (Ehk1-L) as the ligand for EphA5 and ephrin-B2 (Htk-L) as the ligand for EphB4 (Htk).

Catalog Number: E10-20288

Amount: 100µg/100µl

Clone Number: 3D5B10

Species: Mouse IgG1

Aliases: EPA6; FLJ35246; PRO57066; DKFZp434C1418

Entrez Gene: 285220

Immunogen: Purified recombinant fragment of EphA6 (aa695-795) expressed in E. Coli.

Storage: Store at 4 °C for long term storage at -20 °C

Formulation: Ascitic fluid containing 0.03% sodium azide.

Species Reactivities: Human

Tested Applications: WB ,ELISA. Not yet tested in other applications. Determining optimal working dilutions by titration test.

Application notes: WB.1/500 - 1/2000. ELISA. Propose dilution 1/10000.

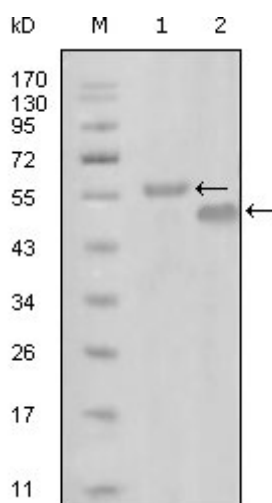


Figure 1. Western blot analysis using EphA6 mouse mAb against truncated MBP-EphA6 recombinant protein (1) and truncated GST-EphA6(aa695-795) recombinant protein (2).

For Research Use Only