



## SKP2 Mouse Monoclonal Antibody

E10-20290

**Background:** SKP2. S-phase kinase-associated protein 2 (p45). This gene encodes a member of the F-box protein family which is characterized by an approximately 40 amino acid motif, the F-box. The F-box proteins constitute one of the four subunits of ubiquitin protein ligase complex called SCFs (SKP1-cullin-F-box), which function in phosphorylation-dependent ubiquitination. The F-box proteins are divided into 3 classes. Fbws containing WD-40 domains, Fbls containing leucine-rich repeats, and Fbxs containing either different protein-protein interaction modules or no recognizable motifs. The protein encoded by this gene belongs to the Fbls class; in addition to an F-box, this protein contains 10 tandem leucine-rich repeats. This protein is an essential element of the cyclin A-CDK2 S-phase kinase. It specifically recognizes phosphorylated cyclin-dependent kinase inhibitor 1B (CDKN1B, also referred to as p27 or KIP1) predominantly in S phase and interacts with S-phase kinase-associated protein 1 (SKP1 or p19). In addition, this gene is established as a protooncogene causally involved in the pathogenesis of lymphomas. Alternative splicing of this gene generates 2 transcript variants encoding different isoforms.

**Catalog Number:** E10-20290

**Amount:** 100µg/100µl

**Clone Number:** 6G9D10

**Species:** Mouse IgG1

**Aliases:** FBL1; FLB1; FBXL1; MGC1366; SKP2

**Entrez Gene:** 6502

**Immunogen:** Purified recombinant fragment of SKP2 (aa1-130) expressed in E. Coli.

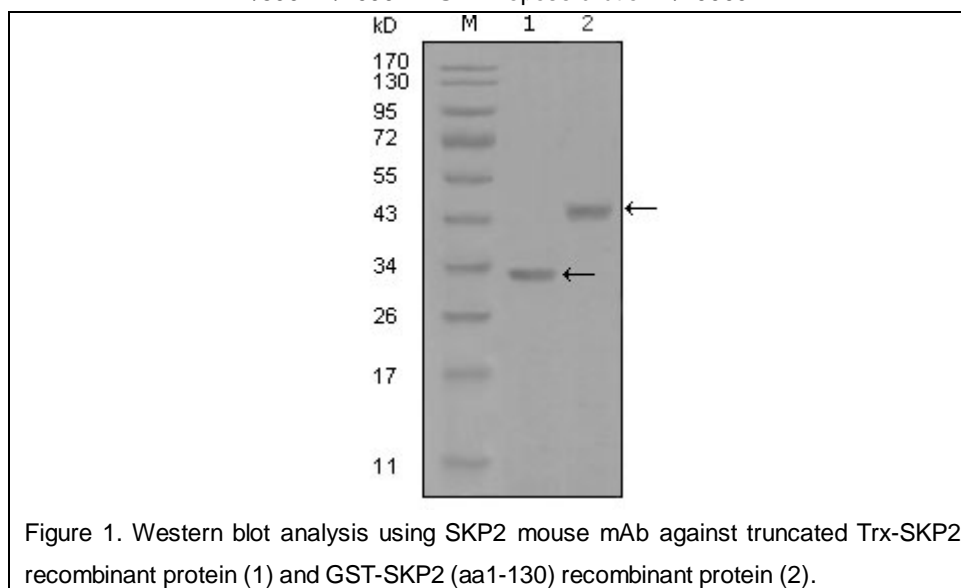
**Storage:** Store at 4 °C. For long term storage, store at -20 °C.

**Formulation:** Ascitic fluid containing 0.03% sodium azide.

**Species Reactivities:** Human

**Tested Applications:** WB ,ELISA. Not yet tested in other applications. Determining optimal working dilutions by titration test.

**Application notes:** WB.1/500 - 1/2000.ELISA. Propose dilution 1/10000.



**For Research Use Only**