



## LPA Mouse Monoclonal Antibody

E10-20294

**Background:** LPA: lipoprotein, Lp(a). Apo(a) is the main constituent of lipoprotein(a) (lp(a)). It has serine proteinase activity and is able of autoproteolysis. Inhibits tissue-type plasminogen activator 1. Lp(a) may be a ligand for megalin/gp 330. Apo(a) is known to be proteolytically cleaved, leading to the formation of the so-called mini-lp(a). Apo(a) fragments accumulate in atherosclerotic lesions, where they may promote thrombogenesis. O-glycosylation may limit the extent of proteolytic fragmentation.

**Catalog Number:** E10-20294

**Amount:** 100µg/100µl

**Clone Number:** 8F6A9, 8H5C5

**Species:** Mouse IgG1

**Aliases:** LP; AK38; APOA; LPA

**Entrez Gene:** 4018

**Immunogen:** Purified recombinant fragment of LPA (4330-4521) expressed in E. Coli.

**Storage:** Store at 4 °C for long term storage, store at 20 °C for 1 month

**Formulation:** Ascitic fluid containing 0.03% sodium azide.

**Species Reactivities:** Human

**Tested Applications:** WB, IHC, ELISA. Not yet tested in other applications. Determining optimal working dilutions by titration test.

**Application notes:** WB: 1/500 - 1/2000. IHC: 1/200 - 1/1000. ELISA: Propose dilution 1/10000.

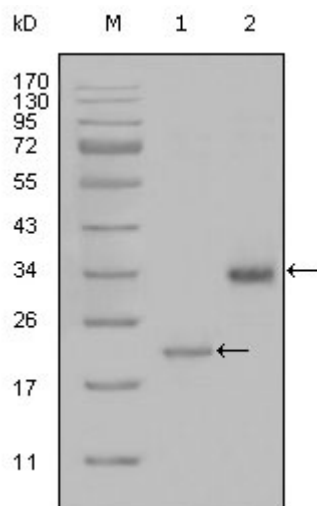


Figure 1: Western blot analysis using LPA mouse mAb against truncated LPA-His recombinant protein (1) and truncated Trx-LPA(aa4330-4521) recombinant protein (2).

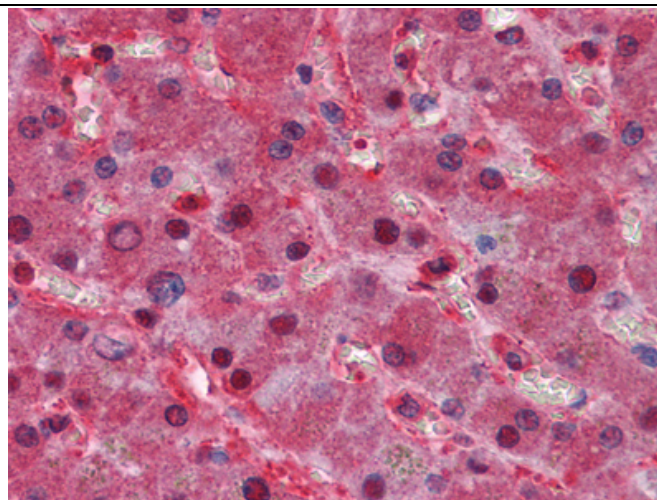


Figure 2: Immunohistochemical analysis of paraffin-embedded human Liver tissues using LPA mouse mAb