



PEG10 Mouse Monoclonal Antibody

E10-20295

Background: PEG10: paternally expressed 10. This gene includes two overlapping reading frames of the same transcript encoding distinct isoforms. The shorter isoform has a CCHC-type zinc finger motif containing a sequence characteristic of gag proteins of most retroviruses and some retrotransposons, and it functions in part by interacting with members of the TGF-beta receptor family. The longer isoform has the active-site DSG consensus sequence of the protease domain of pol proteins. The longer isoform is the result of -1 translational frameshifting that is also seen in some retroviruses. Expression of these two isoforms only comes from the paternal allele due to imprinting. Increased gene expression (as observed by an increase in mRNA levels) is associated with hepatocellular carcinomas.

Catalog Number: E10-20295

Amount: 100µg/100µl

Clone Number: 1B1C4

Species: Mouse IgG1

Aliases: Edr; HB-1; Mar2; MEF3L; Mart2; RGAG3; KIAA1051

Entrez Gene: 23089

Immunogen: Purified recombinant fragment of PEG10 (aa1-120) expressed in E. Coli.

Storage: Store at 4 °C, for long-term storage, store at -20 °C

Formulation: Ascitic fluid containing 0.03% sodium azide.

Species Reactivities: Human

Tested Applications: WB ,IHC,IF,ELISA. Not yet tested in other applications. Determining optimal working dilutions by titration test.

Application notes: WB:1/500 - 1/2000.IHC:1/200 - 1/1000.IF:1/200 - 1/1000.ELISA: Propose dilution 1/10000.

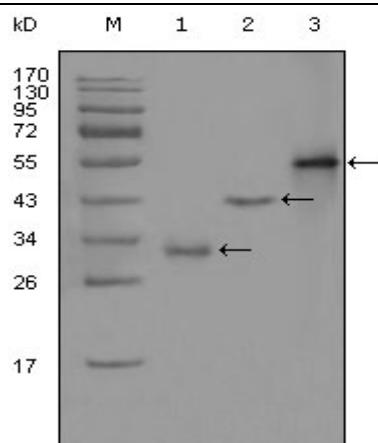


Figure 1: Western blot analysis using PEG10 mouse mAb against truncated Trx-PEG10 recombinant protein (1), truncated GST-PEG10 (aa1-120) recombinant protein (2) and full-length PEG10 (aa1-325)-hlgGfc transfected CHO-K1 cell lysate (3).

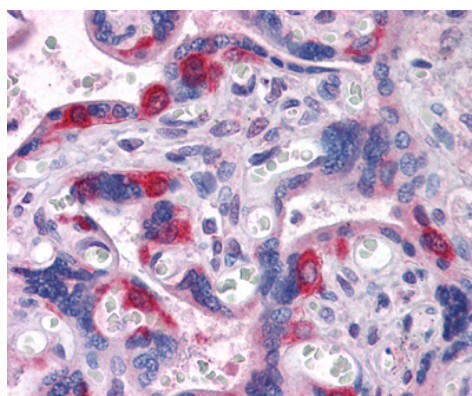


Figure 2: Immunohistochemical analysis of paraffin-embedded human Placenta tissues using PEG10 mouse mAb

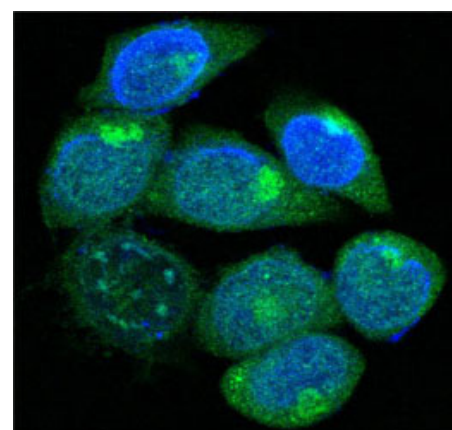


Figure 3: Confocal immunofluorescence analysis of methanol-fixed HepG2 cells using PEG10 mouse mAb (green), showing cytoplasmic localization. Blue: DRAQ5 fluorescent DNA dye.

For Research Use Only