



## Mammaglobin-1 Mouse Monoclonal Antibody

E10-20299

**Background:** Mammaglobin is a gene that is expressed almost exclusively in the normal breast epithelium and human breast cancer. It is a member of the secretoglobulin gene family and forms a heterodimer with lipophilin B. It has been suggested that mammaglobin may be a useful marker for breast cancer clinical research. Studies investigating the detection of mRNA by RT PCR from circulating carcinoma cells in the peripheral blood of breast cancer patients have shown that mammaglobin is a highly specific marker and correlates with several prognostic factors, such as lymph node involvement.

**Catalog Number:** E10-20299

**Amount:** 100µg/100µl

**Clone Number:** 1G8D6,2E7G9

**Species:** Mouse IgG1

**Aliases:** MGB1; UGB2; SCGB2A2

**Entrez Gene:** 4250

**Immunogen:** Purified recombinant fragment of Mammaglobin-1 expressed in E. Coli.

**Storage:** Store at 4 °C for long term storage, store at -20 °C

**Formulation:** Ascitic fluid containing 0.03% sodium azide.

**Species Reactivities:** Human

**Tested Applications:** WB , ELISA. Not yet tested in other applications. Determining optimal working dilutions by titration test.

**Application notes:** WB.1/500 - 1/2000. ELISA. Propose dilution 1/10000.

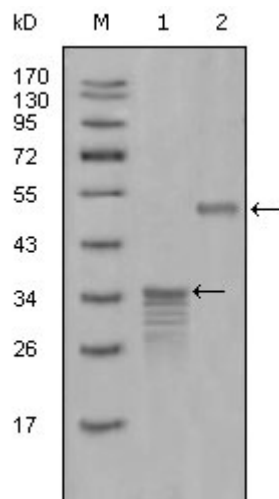


Figure 1. Western blot analysis using Mammaglobin-1 mouse mAb against full-length GST- Mammaglobin-1 (1) and full-length MBP- Mammaglobin-1 (aa1-193) recombinant protein (2).

**For Research Use Only**