



## KLF15 Mouse Monoclonal Antibody

E10-20319

**Background:** KLF15 (Krueppel-like factor 15), also known as KKLf, DKFZp779M1320. Entrez Protein NP\_054798. Sequence analysis predicted that the 416 amino acid KLF15 protein, which is 84% identical to the rat Klf15 protein, contains 3 zinc finger motifs at its C terminus, N-terminal serine-rich stretches, and a central proline-rich segment. KLF15, a kidney-enriched Krueppel-like factor, is a transcriptional activator that binds the CLCNKA promoter. KLF15, which is a nuclear protein, is expressed primarily in liver, heart, skeletal muscle and kidney tissues but is not detected in lymphoid tissues or bone marrow. KLF15 is an important regulator of GLUT4 in both adipose and muscle tissues.

**Catalog Number:** E10-20319

**Amount:** 100µg/100µl

**Clone Number:** 2G8

**Species:** Mouse IgG1

**MW:** 44kDa

**Aliases:** KKLf; DKFZp779M1320

**Entrez Gene:** 28399

**Immunogen:** Purified recombinant fragment of human KLF15 expressed in E. Coli.

**Storage:** Store at 4 °C for long term storage, store at 20 °C for 6 months

**Formulation:** Ascitic fluid containing 0.03% sodium azide.

**Species Reactivities:** Human

**Tested Applications:** WB ,ELISA. Not yet tested in other applications. Determining optimal working dilutions by titration test.

**Application notes:** WB.1/500 - 1/2000.ELISA. Propose dilution 1/10000.

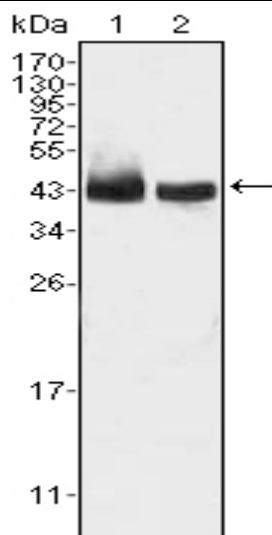


Figure 1. Western blot analysis using KLF15 mouse mAb against HepG2 (1) and SMMC-7721 (2) cell lysate.

**For Research Use Only**