



Cytokeratin 5 Mouse Monoclonal Antibody

E10-20322

Background: Cytokeratin 5, also known as CK5, KRT5. It is a member of the keratin gene family. Biochemically, most members of the CK family fall into one of two classes, type I (acidic polypeptides) and type II (basic polypeptides). The type II cytokeratins consist of basic or neutral proteins which are arranged in pairs of heterotypic keratin chains coexpressed during differentiation of simple and stratified epithelial tissues. This type II cytokeratin is specifically expressed in the basal layer of the epidermis with family member KRT14. The type II cytokeratins are clustered in a region of chromosome 12q12-q13. At least one member of the acidic family and one member of the basic family is expressed in all epithelial cells. Cytokeratin 5 is expressed in normal basal cells. Mutations of the Cytokeratin5 gene (KRT5) have been shown to result in the autosomal dominant disorder epidermolysis bullosa (EB). Defects in KRT5 are a cause of epidermolysis bullosa simplex.

Catalog Number: E10-20322

Amount: 100µg/100µl

Clone Number: 1E1

Species: Mouse IgG1

MW: 62.3kDa

Aliases: K5; CK5; KRT5A; KRT5

Entrez Gene: 3852

Immunogen: Purified recombinant fragment of Cytokeratin 5 expressed in E. Coli.

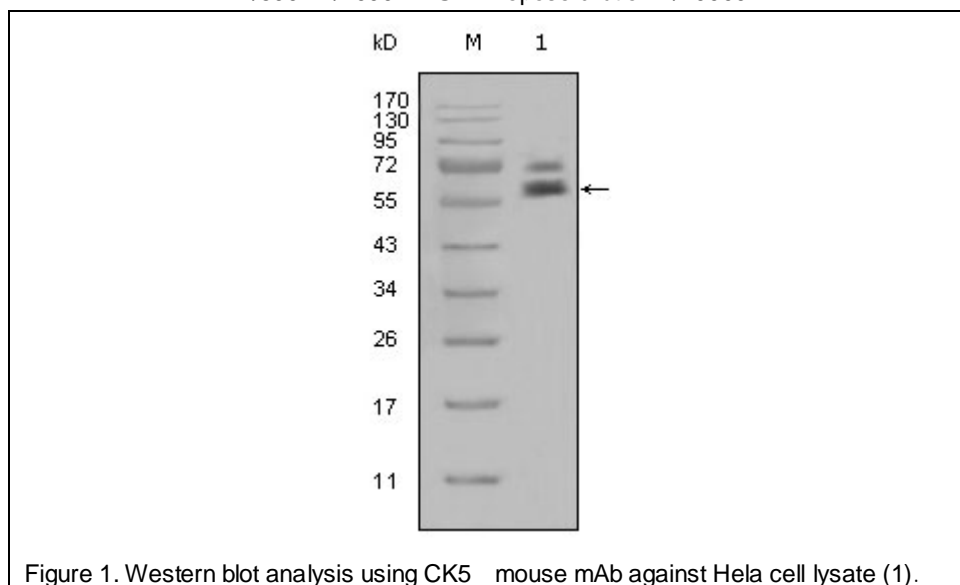
Storage: Store at 4 °C, stable at 20 °C for 12 months

Formulation: Ascitic fluid containing 0.03% sodium azide.

Species Reactivities: Human

Tested Applications: WB ,ELISA. Not yet tested in other applications. Determining optimal working dilutions by titration test.

Application notes: WB.1/500 - 1/2000.ELISA. Propose dilution 1/10000.



For Research Use Only