



## BRAF Mouse Monoclonal Antibody

E10-20323

**Background:** Cytokeratin 5, also known as CK5, KRT5. It is a member of the keratin gene family. Biochemically, most members of the CK family fall into one of two classes, type I (acidic polypeptides) and type II (basic polypeptides). The type II cytokeratins consist of basic or neutral proteins which are arranged in pairs of heterotypic keratin chains coexpressed during differentiation of simple and stratified epithelial tissues. This type II cytokeratin is specifically expressed in the basal layer of the epidermis with family member KRT14. The type II cytokeratins are clustered in a region of chromosome 12q12-q13. At least one member of the acidic family and one member of the basic family is expressed in all epithelial cells. Cytokeratin 5 is expressed in normal basal cells. Mutations of the Cytokeratin5 gene (KRT5) have been shown to result in the autosomal dominant disorder epidermolysis bullosa (EB). Defects in KRT5 are a cause of epidermolysis bullosa simplex.

**Catalog Number:** E10-20323

**Amount:** 100µg/100µl

**Clone Number:** 1H12

**Species:** Mouse IgG1

**MW:** 87kDa

**Aliases:** BRAF1; RAFB1; B-RAF1; FLJ95109

**Entrez Gene:** 673

**Immunogen:** Purified recombinant fragment of human BRAF expressed in E. Coli.

**Storage:** Store at 4 °C, long term at -20 °C

**Formulation:** Ascitic fluid containing 0.03% sodium azide.

**Species Reactivities:** Human, Mouse

**Tested Applications:** WB, IHC, IF, ELISA. Not yet tested in other applications. Determining optimal working dilutions by titration test.

**Application notes:** WB.1/500 - 1/2000.IHC.1/200 - 1/1000.IF.1/200 - 1/1000.ELISA. Propose dilution 1/10000.

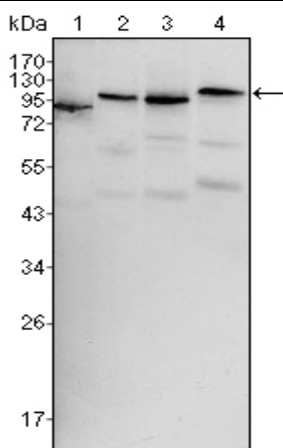


Figure 1. Western blot analysis using BRAF mouse mAb against Hela (1), HL60 (2), HepG2 (3) and NIH/3T3 (4) cell lysate.

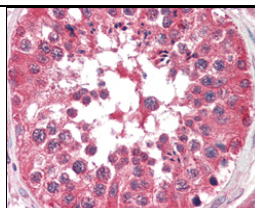


Figure 2. Immunohistochemical analysis of paraffin-embedded human testis tissues using BRAF mouse mAb.

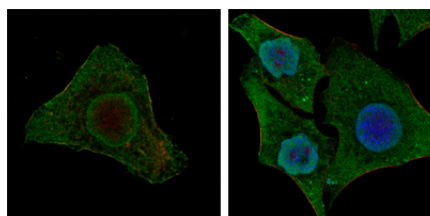


Figure 3. Confocal immunofluorescence analysis of MCF-7 (left) and HepG2 (right) cells using BRAF mouse mAb (green). Red. Actin filaments have been labeled with DY-554 phalloidin. Blue. DRAQ5 fluorescent DNA dye

**For Research Use Only**