



DKK1 Mouse Monoclonal Antibody

E10-20325

Background: DKK1. dickkopf homolog 1 (*Xenopus laevis*), also known as SK. Entrez Protein NP_036374. DKK1 is a member of the dickkopf family. It is a secreted protein with two cysteine rich regions and is involved in embryonic development through its inhibition of the WNT signaling pathway. Elevated levels of DKK1 in bone marrow plasma and peripheral blood is associated with the presence of osteolytic bone lesions in patients with multiple myeloma.

Catalog Number: E10-20325

Amount: 100µg/100µl

Clone Number: 2H2

Species: Mouse IgG2b

MW: 28.7kDa

Aliases: SK; DKK-1;

Entrez Gene: 22943

Immunogen: Purified recombinant fragment of DKK1 expressed in E. Coli

Storage: Store at 4 °C for long term storage, store at -20 °C

Formulation: Ascitic fluid containing 0.03% sodium azide.

Species Reactivities: Human

Tested Applications: WB ,ELISA. Not yet tested in other applications. Determining optimal working dilutions by titration test.

Application notes: WB.1/500 - 1/2000.ELISA. Propose dilution 1/10000.

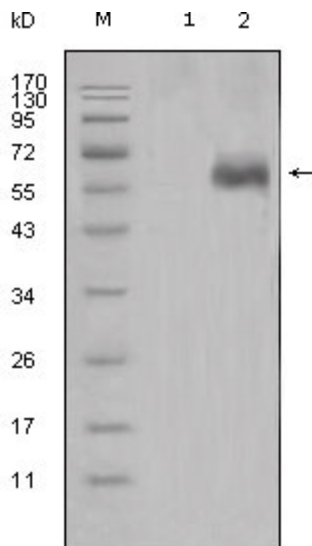


Figure 1. Western blot analysis using DKK1 mouse mAb against HEK293 (1) and DKK1-hlgFc transfected HEK293 cell lysate (2).