



ISL1 Mouse Monoclonal Antibody

E10-20344

Background: ISL1 (ISL1 transcription factor, LIM/homeodomain) is a member of the LIM/homeodomain family of transcription factors. It binds to the enhancer region of the insulin gene, among others, and may play an important role in regulating insulin gene expression. It is central to the development of pancreatic cell lineages and may also be required for motor neuron generation. Islet-1 expression defines cardiac progenitor cell populations and is required for normal cardiac development and asymmetry. Mutations in this gene have been associated with maturity-onset diabetes of the young.

Catalog Number: E10-20344

Amount: 100µg/100µl

Clone Number: 1H9

Species: Mouse IgG1

MW: 39kDa

Aliases: Isl-1; ISLET1

Entrez Gene: 3670

Immunogen: Purified recombinant fragment of human ISL1 expressed in E. Coli.

Storage: Store at 4 °C for long term storage, store at -20 °C for short term storage.

Formulation: Ascitic fluid containing 0.03% sodium azide.

Species Reactivities: Human

Tested Applications: WB,IHC,IF,ELISA. Not yet tested in other applications. Determining optimal working dilutions by titration test.

Application notes: WB.1/500 - 1/2000.IHC.1/200 - 1/1000.IF. 1/200 - 1/1000.ELISA. Propose dilution 1/10000.

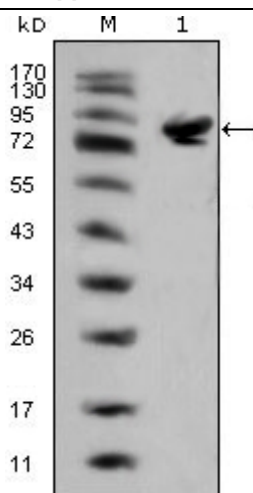


Figure 1. Western blot analysis using MYL3 (1) and MYL2 (2) mouse mAb against rat fetal heart tissues lysate.

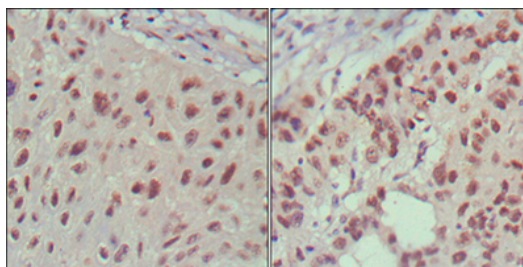


Figure 2. Immunohistochemical analysis of paraffin-embedded human lung cancer (left) and cervical carcinoma (right), showing nuclear localization using ISL1 mouse mAb with DAB staining.

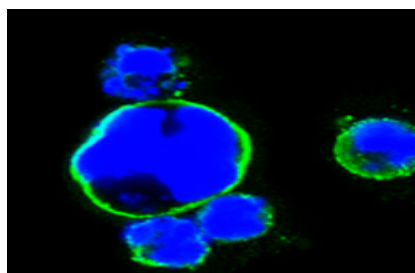


Figure 3. Immunohistochemical analysis of paraffin-embedded human Heart tissues using MYL3 mouse mAb.

For Research Use Only