



ISL1 Mouse Monoclonal Antibody

E10-20345

Background: ISL1 (ISL1 transcription factor, LIM/homeodomain) is a member of the LIM/homeodomain family of transcription factors. It binds to the enhancer region of the insulin gene, among others, and may play an important role in regulating insulin gene expression. It is central to the development of pancreatic cell lineages and may also be required for motor neuron generation. Islet-1 expression defines cardiac progenitor cell populations and is required for normal cardiac development and asymmetry. Mutations in this gene have been associated with maturity-onset diabetes of the young.

Catalog Number: E10-20345

Amount: 100µg/100µl

Clone Number: 1B1

Species: Mouse IgG1

MW: 39kDa

Aliases: Isl-1; ISLET1

Entrez Gene: 3670

Immunogen: Purified recombinant fragment of human ISL1 expressed in E. Coli.

Storage: Store at 4 °C for long term storage, store at -20 °C for short term storage.

Formulation: Ascitic fluid containing 0.03% sodium azide.

Species Reactivities: Human

Tested Applications: WB IF, ELISA. Not yet tested in other applications. Determining optimal working dilutions by titration test.

Application notes: WB. 1/500 - 1/2000. IF. 1/200 - 1/1000. ELISA. Propose dilution 1/10000.

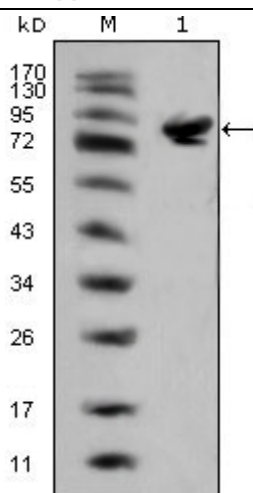


Figure 1. Western blot analysis using ISL1 mouse mAb against full-length ISL1 (aa1-349)-hlgGfc transfected HEK293 cell lysate(1).

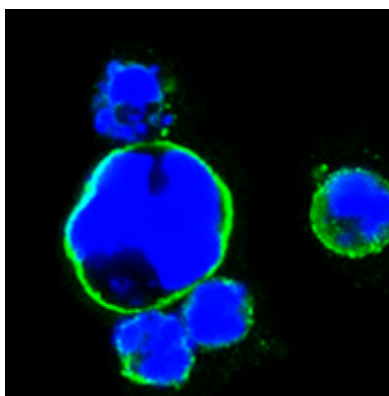


Figure 2. Confocal immunofluorescence analysis of HEK293 cells transfected with full-length ISL1-hlgGfc using ISL1 mouse mAb (green). Blue. DRAQ5 fluorescent DNA dye.