



CD18 Mouse Monoclonal Antibody

E10-20346

Background: CD18, also known as ITGB2 (integrin beta chain beta 2). Integrins are integral cell-surface proteins composed of an alpha chain and a beta chain. A given chain may combine with multiple partners resulting in different integrins. For example, beta 2 combines with the alpha L chain to form the integrin LFA-1, and combines with the alpha M chain to form the integrin Mac-1. Integrins are known to participate in cell adhesion as well as cell-surface mediated signalling. CD18 is expressed by most leucocytes. Defects in this gene are the cause of leukocyte adhesion deficiency type I (LAD1). Two transcript variants encoding the same protein have been identified for this gene.

Catalog Number: E10-20346

Amount: 100µg/100µl

Clone Number: 10E12

Species: Mouse IgG1

MW: 85kDa

Aliases: LAD; MF17; LCAMB; LFA-1; ITGB2

Entrez Gene: 3689

Immunogen: Purified recombinant fragment of CD18 expressed in E. Coli.

Storage: Store at 4 °C for long term storage, store at 20 °C for 6 months

Formulation: Ascitic fluid containing 0.03% sodium azide.

Species Reactivities: Human, Mouse

Tested Applications: IF, ELISA. Not yet tested in other applications. Determining optimal working dilutions by titration test.

Application notes: IF. 1/200 - 1/1000. ELISA. Propose dilution 1/10000.

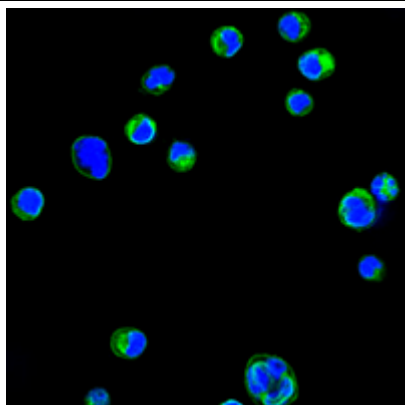


Figure 1. Confocal immunofluorescence analysis of HL60 cells using CD18 mouse mAb (green). Blue. DRAQ5 fluorescent DNA dye.

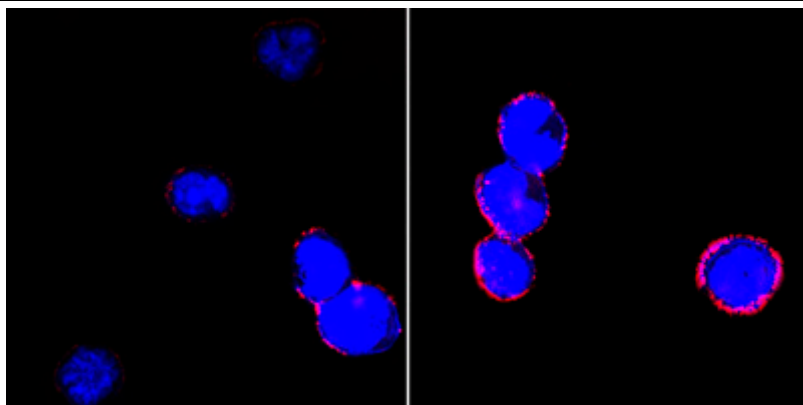


Figure 2. Confocal immunofluorescence analysis of BCBL-1 cells (left) and L1210 cells (right) using CD18 mouse mAb (red). Blue. DRAQ5 fluorescent DNA dye.

For Research Use Only