



FGB Mouse Monoclonal Antibody

E10-20348

Background: Fibrinogen beta chain, also known as FGB, is a gene found in humans and most other vertebrates with a similar system of blood coagulation. It is the beta component of fibrinogen, a blood-borne glycoprotein comprised of three pairs of nonidentical polypeptide chains. Following vascular injury, fibrinogen is cleaved by thrombin to form fibrin which is the most abundant component of blood clots. In addition, various cleavage products of fibrinogen and fibrin regulate cell adhesion and spreading, display vasoconstrictor and chemotactic activities, and are mitogens for several cell types. Mutations in this gene lead to several disorders, including afibrinogenemia, dysfibrinogenemia, hypodysfibrinogenemia and thrombotic tendency.

Catalog Number: E10-20348

Amount: 100µg/100µl

Clone Number: 1F9

Species: Mouse IgG1

MW: 52kDa

Aliases: fibrinogen beta chain

Entrez Gene: 2244

Immunogen: Purified recombinant fragment of human FGB (aa30-300) expressed in E. Coli.

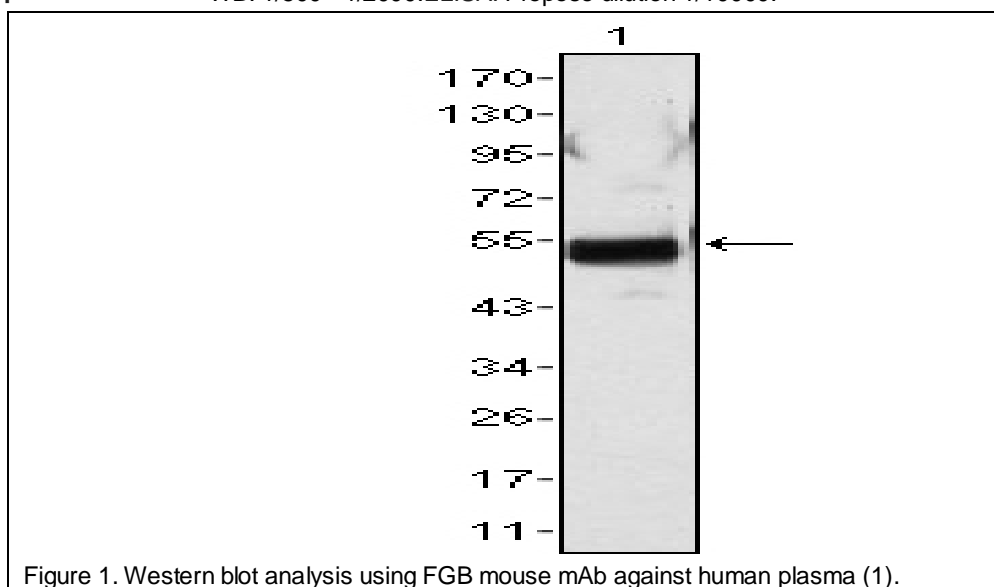
Storage: Store at 4°C, Stable long term storage

Formulation: Ascitic fluid containing 0.03% sodium azide.

Species Reactivities: Human

Tested Applications: WB, ELISA. Not yet tested in other applications. Determining optimal working dilutions by titration test.

Application notes: WB. 1/500 - 1/2000. ELISA. Propose dilution 1/10000.



For Research Use Only