



AAT Mouse Monoclonal Antibody

E10-20350

Background: AAT, also known as SERPINA1; serpin peptidase inhibitor, clade A (alpha-1 antiproteinase, antitrypsin), member 1. It is secreted and is a serine protease inhibitor whose targets include elastase, plasmin, thrombin, trypsin, chymotrypsin, and plasminogen activator. Severe Serpin A1 deficiency leads to several clinical complications such as pulmonary emphysema, juvenile hepatitis, cirrhosis and hepatocellular carcinoma.

Catalog Number: E10-20350

Amount: 100µg/100µl

Clone Number: 2B12

Species: Mouse IgG1

MW: 47kDa

Aliases: PI; A1A; AAT; PI1; A1AT; SERPINA1

Entrez Gene: 5265

Immunogen: Purified recombinant fragment of human AAT expressed in E. Coli.

Storage: Store at 4 °C, for long term storage at -20 °C

Formulation: Ascitic fluid containing 0.03% sodium azide.

Species Reactivities: Human, Mouse

Tested Applications: WB, ELISA. Not yet tested in other applications. Determining optimal working dilutions by titration test.

Application notes: WB. 1/500 - 1/2000. ELISA. Propose dilution 1/10000.

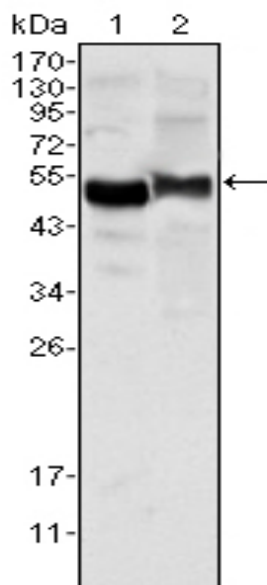


Figure 1. Western blot analysis using AAT mouse mAb against human plasma (1) and NIH/3T3 cell lysate (2).

For Research Use Only