



## FGFR1 Mouse Monoclonal Antibody

E10-20359

**Background:** Fibroblast growth factor receptor 1 (FGFR1), also known as basic fibroblast growth factor receptor 1, fms-related tyrosine kinase-2 / Pfeiffer syndrome, and CD331, is a receptor tyrosine kinase whose ligands are specific members of the fibroblast growth factor family. FGFR1 has been shown to be associated with Pfeiffer syndrome. It is a member of the fibroblast growth factor receptor (FGFR) family, where amino acid sequence is highly conserved between members and throughout evolution. FGFR family members differ from one another in their ligand affinities and tissue distribution. A full-length representative protein consists of an extracellular region, composed of three immunoglobulin-like domains, a single hydrophobic membrane-spanning segment and a cytoplasmic tyrosine kinase domain. The extracellular portion of the protein interacts with fibroblast growth factors, setting in motion a cascade of downstream signals, ultimately influencing mitogenesis and differentiation. This particular family member binds both acidic and basic fibroblast growth factors and is involved in limb induction.

**Catalog Number:** E10-20359

**Amount:** 100µg/100µl

**Clone Number:** 3D4F7

**Species:** Mouse IgG2b

**MW:** 92kDa

**Aliases:** CEK; FLG; OGD; FLT2; KAL2; BFGFR; CD331; FGFBR; HBGFR

**Entrez Gene:** 2260

**Immunogen:** Purified recombinant extracellular fragment of human FGFR1 (aa22-376) fused with hlgFc tag expressed in HEK293 cells.

**Storage:** Store at 4 °C for long term storage, store at 20 °C for short term storage

**Formulation:** Ascitic fluid containing 0.03% sodium azide.

**Species Reactivities:** Human

**Tested Applications:** WB, ELISA. Not yet tested in other applications. Determining optimal working dilutions by titration test.

**Application notes:** WB. 1/500 - 1/2000. ELISA. Propose dilution 1/10000.

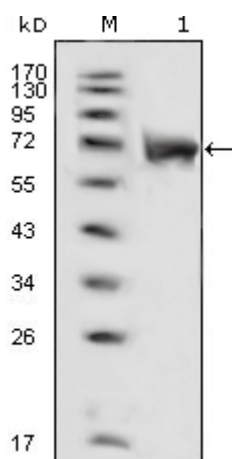


Figure 1. Western blot analysis using FGFR1 mouse mAb against extracellular domain of human FGFR1 (aa22-376).

**For Research Use Only**