



AFP Mouse Monoclonal Antibody

E10-20405

Background: AFP (alpha-fetoprotein), a major plasma protein produced by the yolk sac and the liver during fetal life. Alpha-fetoprotein expression in adults is often associated with hepatoma or teratoma. However, hereditary persistence of alpha-fetoprotein may also be found in individuals with no obvious pathology. The protein is thought to be the fetal counterpart of serum albumin, and the alpha-fetoprotein and albumin genes are present in tandem in the same transcriptional orientation on chromosome 4. Alpha-fetoprotein is found in monomeric as well as dimeric and trimeric forms, and binds copper, nickel, fatty acids and bilirubin. The level of alpha-fetoprotein in amniotic fluid is used to measure renal loss of protein to screen for spina bifida and anencephaly.

Catalog Number: E10-20405

Amount: 100µg/100µl

Clone Number: 6E6

Species: Mouse IgG2b

MW: 69kDa

Aliases: alpha-fetoprotein; FETA; HPAFP

Entrez Gene: 174

Immunogen: Purified recombinant fragment of human AFP expressed in E. Coli.

Storage: Store at 4 °C. ~~Store at 20 °C~~ storage,

Formulation: Ascitic fluid containing 0.03% sodium azide.

Species Reactivities: Human

Tested Applications: WB,ELISA. Not yet tested in other applications. Determining optimal working dilutions by titration test.

Application notes: WB 1/500 - 1/2000.ELISA. Propose dilution 1/10000.

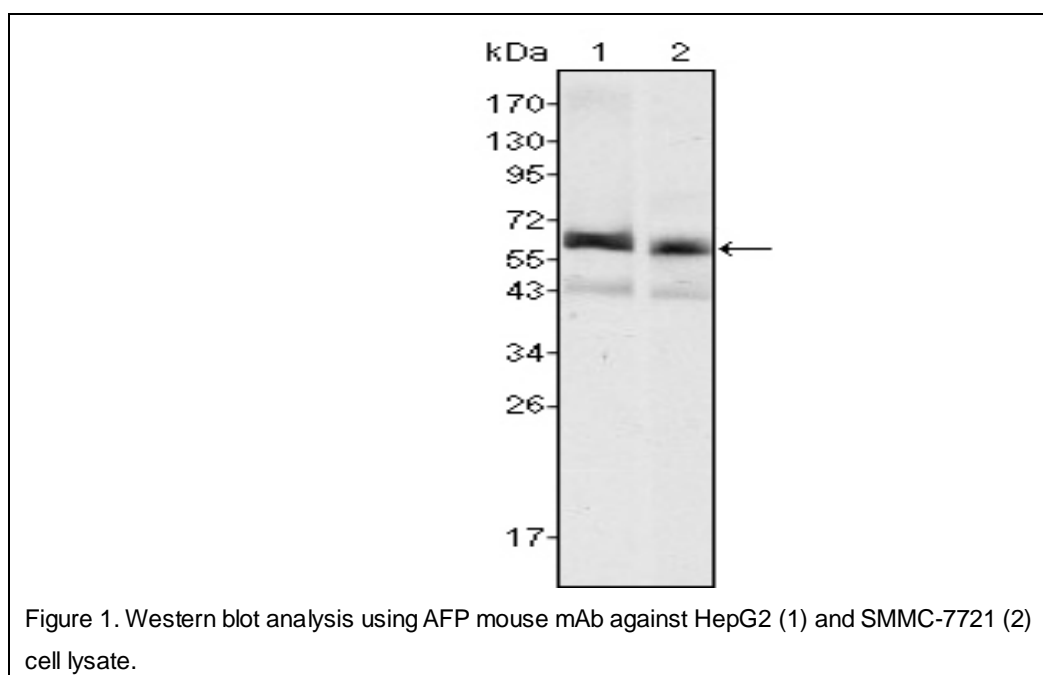


Figure 1. Western blot analysis using AFP mouse mAb against HepG2 (1) and SMMC-7721 (2) cell lysate.

For Research Use Only