



KRT15 Mouse Monoclonal Antibody

E10-20410

Background: The protein encoded by this gene is a member of the keratin gene family. The keratins are intermediate filament proteins responsible for the structural integrity of epithelial cells and are subdivided into cytokeratins and hair keratins. Keratin 15 is a type I keratin without a defined type II partner. Keratin 15 is expressed primarily in the basal keratinocytes of stratified tissues, including the fetal epidermis and fetal nail. Expression of keratin 15 is downregulated in some hyperproliferating situations, such as psoriasis and hypertrophic scars. Because keratinocytes in psoriasis and hypertrophic scars are activated, it is suggested that keratin 15 expression is not compatible with keratinocyte activation and the keratin 15 gene is downregulated to maintain the activated phenotype.

Catalog Number: E10-20410

Amount: 100µg/100µl

Clone Number: 6E7

Species: Mouse IgG2a

MW: 49kDa

Aliases: K15; CK15; K1CO; KRT1

Entrez Gene: 3866

Immunogen: Purified recombinant fragment of KRT15 expressed in E. Coli.

Storage: Store at 4 °C. For long term storage, store at -20 °C.

Formulation: Ascitic fluid containing 0.03% sodium azide.

Species Reactivities: Human

Tested Applications: WB,IHC,IF,FC,ELISA. Not yet tested in other applications. Determining optimal working dilutions by titration test.

Application notes: WB 1/500 - 1/2000,IHC.1/200 - 1/1000, IF.1/200 - 1/1000,FC.1/200 - 1/400,ELISA. Propose dilution 1/10000.

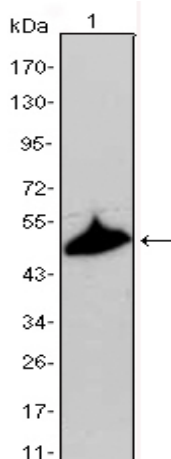


Figure 1. Western blot analysis using KRT15 mouse mAb against A431 cell lysate.

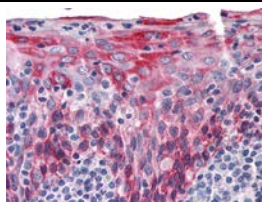


Figure 2. Immunohistochemical analysis of paraffin-embedded human Tonsil tissues using KRT15 mouse mAb

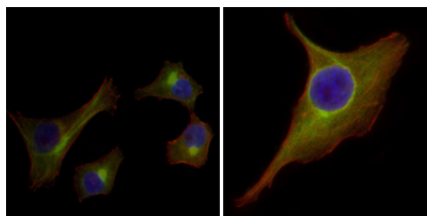


Figure 3. Immunofluorescence analysis of HepG2(left) and PACN-1 (right) cells using KRT15 mouse mAb (green). Red. Actin filaments have been labeled with DY-554 phalloidin. Blue. DRAQ5 fluorescent DNA dye.

For Research Use Only