



BMP4 Mouse Monoclonal Antibody

E10-20415

Background: The protein encoded by this gene is a member of the bone morphogenetic protein family which is part of the transforming growth factor-beta superfamily. The superfamily includes large families of growth and differentiation factors. BMPs (bone morphogenetic proteins) belong to the TGF beta superfamily of structurally related signaling proteins. Members of this superfamily are widely represented throughout the animal kingdom and have been implicated in a variety of developmental processes. Proteins of the TGF beta superfamily are disulfide-linked dimers composed of two 12-15 kDa polypeptide chains. As implied by their name, BMPs initiate, promote and regulate bone development, growth, remodeling and repair. Smad1 translocation to the nucleus is observed after the addition of BMP4 (also designated BMP2B), suggesting that BMP4 may play a role in activation of the Smad pathway. BMP is secreted into the extracellular matrix.

Catalog Number: E10-20415

Amount: 100µg/100µl

Clone Number: 10F4B4

Species: Mouse IgG1

MW: 64kDa

Aliases: ZYME; BMP2B; OFC11; BMP2B1; MCOPS6; BMP4

Entrez Gene: 652

Immunogen: Purified recombinant fragment of human BMP4 expressed in E. Coli.

Storage: Store at 4 °C for 1 month, store at -20 °C for 1 year.

Formulation: Ascitic fluid containing 0.03% sodium azide.

Species Reactivities: Human

Tested Applications: WB, ELISA. Not yet tested in other applications. Determining optimal working dilutions by titration test.

Application notes: WB 1/500 - 1/2000. ELISA. Propose dilution 1/10000.

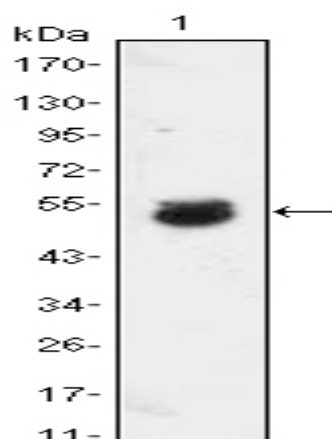


Figure 1. Western blot analysis using BMP4 mouse mAb against BMP4-hlgGfC transfected HEK293 cell lysate.

For Research Use Only