



## CHD3 Mouse Monoclonal Antibody

E10-20422

**Background:** This gene encodes a member of the CHD family of proteins which are characterized by the presence of chromo (chromatin organization modifier) domains and SNF2-related helicase/ATPase domains. This protein is one of the components of a histone deacetylase complex referred to as the Mi-2/NuRD complex which participates in the remodeling of chromatin by deacetylating histones. Chromatin remodeling is essential for many processes including transcription. Autoantibodies against this protein are found in a subset of patients with dermatomyositis. Three alternatively spliced transcripts encoding different isoforms have been described.

**Catalog Number:** E10-20422

**Amount:** 100µg/100µl

**Clone Number:** 2G4

**Species:** Mouse IgG1

**MW:** 226kDa

**Aliases:** ZFH; Mi-2a; Mi2-ALPHA; CHD3

**Entrez Gene:** 1107

**Immunogen:** Purified recombinant fragment of human CHD3 expressed in E. Coli.

**Storage:** Store at 4 °C for long term storage, store at -20 °C

**Formulation:** Ascitic fluid containing 0.03% sodium azide.

**Species Reactivities:** Human; Mouse

**Tested Applications:** WB,IHC,IF,FC,ELISA. Not yet tested in other applications. Determining optimal working dilutions by titration test.

**Application notes:** WB 1/500 - 1/2000,IHC: 1/200 - 1/1000.IF: 1/200 - 1/1000.FC:1/200 - 1/400.ELISA: Propose dilution 1/10000.

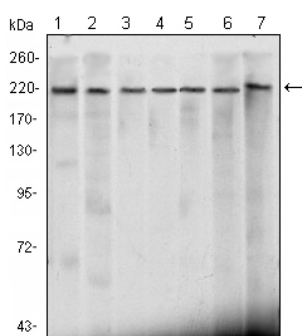


Figure 1: Western blot analysis using CHD3 mouse mAb against Hela (1), K562 (2), Jurkat (3), NTERA-2 (4), HEK293 (5), Raji (6) cell lysate and mouse brain (7) tissue lysate.

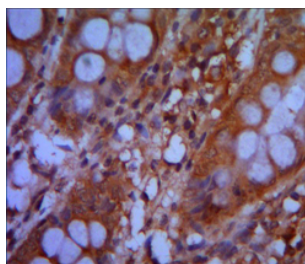


Figure 2: Immunohistochemical analysis of paraffin-embedded colon cancer tissues using CHD3 mouse mAb with DAB staining.

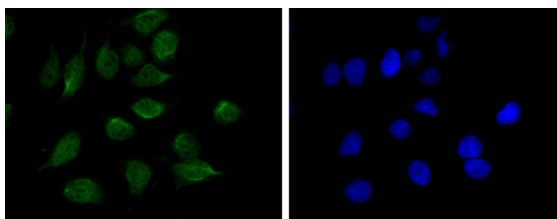


Figure 3: Immunofluorescence analysis of Hela cells using CHD3 mouse mAb (green). Blue: DRAQ5 fluorescent DNA dye.

**For Research Use Only**