



TLR2 Mouse Monoclonal Antibody

E10-20424

Background: The protein encoded by this gene is a member of the Toll-like receptor (TLR) family which plays a fundamental role in pathogen recognition and activation of innate immunity. TLRs are highly conserved from *Drosophila* to humans and share structural and functional similarities. They recognize pathogen-associated molecular patterns (PAMPs) that are expressed on infectious agents, and mediate the production of cytokines necessary for the development of effective immunity. The various TLRs exhibit different patterns of expression. This gene is expressed most abundantly in peripheral blood leukocytes, and mediates host response to Gram-positive bacteria and yeast via stimulation of NF-kappaB.

Catalog Number: E10-20424

Amount: 100µg/100µl

Clone Number: 2D6

Species: Mouse IgG1

MW: 100kDa

Aliases: TIL4; CD282; TLR2

Entrez Gene: 7097

Immunogen: Purified recombinant fragment of human TLR2 expressed in *E. Coli*.

Storage: Store at 4 °C for long term storage, store at -20 °C for short term storage.

Formulation: Ascitic fluid containing 0.03% sodium azide.

Species Reactivities: Human

Tested Applications: WB, ELISA. Not yet tested in other applications. Determining optimal working dilutions by titration test.

Application notes: WB 1/500 - 1/2000, ELISA: Propose dilution 1/10000.

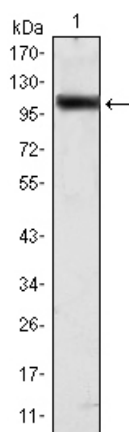


Figure 1: Western blot analysis using TLR2 mouse mAb against Hela (1) cell lysate.

For Research Use Only