



PP32 Mouse Monoclonal Antibody

E10-20433

Background: Implicated in a number of cellular processes, including proliferation, differentiation, caspase-dependent and caspase-independent apoptosis, suppression of transformation (tumor suppressor), inhibition of protein phosphatase 2A, regulation of mRNA trafficking and stability in association with ELAVL1, and inhibition of acetyltransferases as part of the INHAT (inhibitor of histone acetyltransferases) complex. Plays a role in E4F1-mediated transcriptional repression.

Catalog Number: E10-20433

Amount: 100µg/100µl

Clone Number: 8D2

Species: Mouse IgG1

MW: 28kDa

Aliases: LANP; MAPM; PP32; PHAP1; PHAPI; I1PP2A; C15orf1; MGC119787; MGC150373; ANP32A

Entrez Gene: 8125

Immunogen: Purified recombinant fragment of human PP32 expressed in E. Coli.

Storage: Store at 4 °C for long term storage, store at -20 °C for short term storage.

Formulation: Ascitic fluid containing 0.03% sodium azide.

Species Reactivities: Human

Tested Applications: WB, IHC, ELISA. Not yet tested in other applications. Determining optimal working dilutions by titration test.

Application notes: WB 1/500 - 1/2000. IHC 1/200 - 1/1000. ELISA. Propose dilution 1/10000.

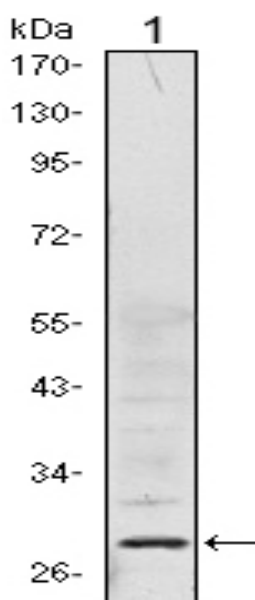


Figure 1. Western blot analysis using PP32 mouse mAb against Hela (1) cell lysate.

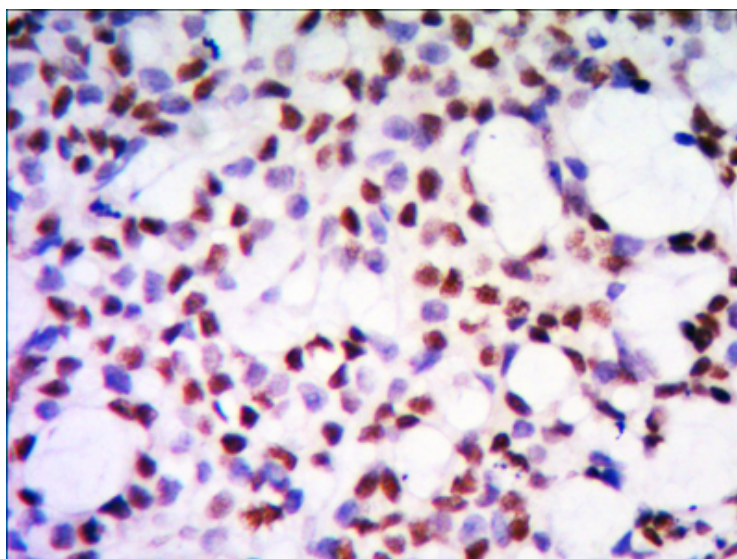


Figure 2. Immunohistochemical analysis of paraffin-embedded human kidney tissue using PP32 mouse mAb with DAB staining.

For Research Use Only