



## BDH1 Mouse Monoclonal Antibody

E10-30003

**Background:** BDH1 (3-hydroxybutyrate dehydrogenase, type 1), it is a member of the short-chain dehydrogenase/reductase gene family. This protein forms a homotetrameric lipid-requiring enzyme of the mitochondrial membrane and has a specific requirement for phosphatidylcholine for optimal enzymatic activity. It catalyzes the interconversion of acetoacetate and (R)-3-hydroxybutyrate, the two major ketone bodies produced during fatty acid catabolism.

**Catalog Number:** E10-30003

**Amount:** 100µg/100µl

**Clone Number:** 1A5

**Species:** Mouse IgG1

**MW** 38kDa

**Aliases:** BHD

**Entrez Gene:** 622

**Immunogen:** Purified recombinant fragment of human BDH1 expressed in E. Coli.

**Storage:** Store at 4 °C for long term storage, store at -20 °C for 10 years

**Formulation:** Ascitic fluid containing 0.03% sodium azide.

**Species Reactivities:** Human; Mouse

**Tested Applications:** WB, IHC, ELISA. Not yet tested in other applications.

**Application notes:** WB: 1/500 - 1/2000, IHC: 1/200 - 1/1000, ELISA: Propose dilution 1/10000.

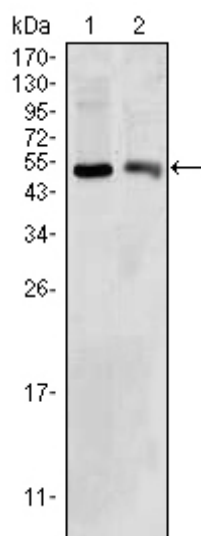


Figure 1: Western blot analysis using BDH1 mouse mAb against HepG2 (1) and NIH/3T3 (2) cell lysate.

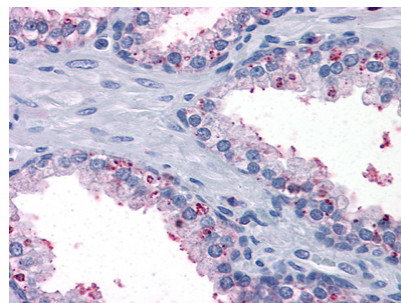


Figure 2: Immunohistochemical analysis of paraffin-embedded human Prostate tissues using anti-BDH1 mouse mAb.

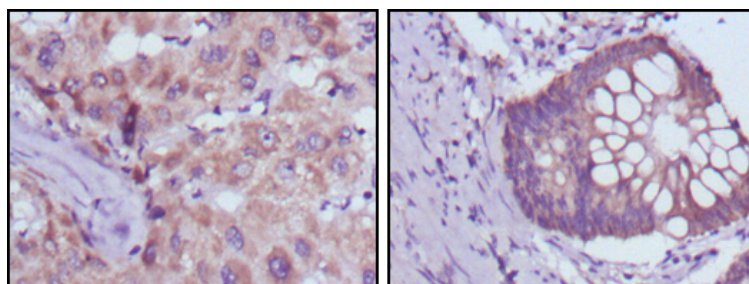


Figure 3: Immunohistochemical analysis of paraffin-embedded human liver cancer (left) and colorectal cancer tissues (right) using BDH1 mouse mAb with DAB staining.

**For Research Use Only**