



PARP Mouse Monoclonal Antibody

E10-30016

Background: This gene encodes a chromatin-associated enzyme, poly(ADP-ribosyl)transferase, which modifies various nuclear proteins by poly(ADP-ribosyl)ation. The modification is dependent on DNA and is involved in the regulation of various important cellular processes such as differentiation, proliferation, and tumor transformation and also in the regulation of the molecular events involved in the recovery of cell from DNA damage. In addition, this enzyme may be the site of mutation in Fanconi anemia, and may participate in the pathophysiology of type I diabetes.

Catalog Number: E10-30016

Amount: 100µg/100µl

Clone Number: 7A10

Species: Mouse IgG1

MW 117kDa

Aliases: PARP; PPOL; ADPRT; ADPRT1; PARP-1; pADPRT-1; PARP1

Entrez Gene: 142

Immunogen: Synthetic peptide of human PARP, conjugated to KLH.

Storage: Store at 4°C, for long term storage, store at -20°C.

Formulation: Ascitic fluid containing 0.03% sodium azide.

Species Reactivities: Human

Tested Applications: WB, FC, ELISA. Not yet tested in other applications.

Application notes: WB: 1/500 - 1/2000, FC: 1/200-1/400, ELISA: Propose dilution 1/10000.

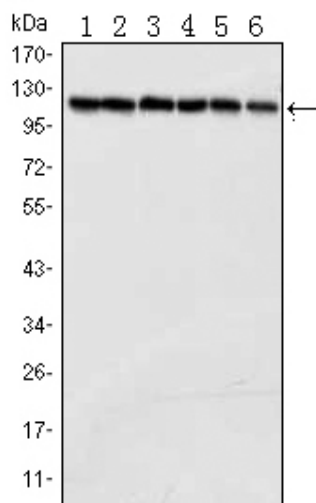


Figure 1: Western blot analysis using PARP mouse mAb against Jurkat (1), K562 (2), Hela (3), Raji (4), THP-1 (5) and SW620 (6) cell lysate.

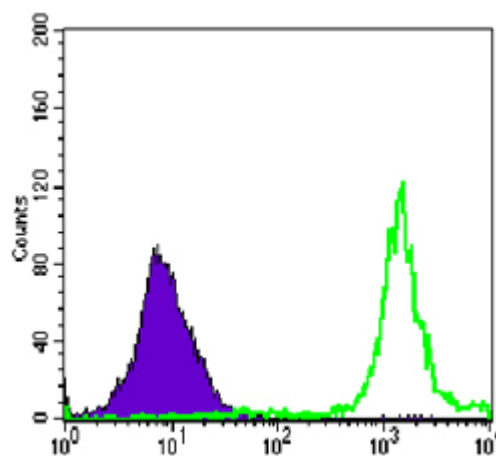


Figure 2: Flow cytometric analysis of Jurkat cells using anti-PARP mAb (green) and negative control (purple).

For Research Use Only