



ICAM1 Mouse Monoclonal Antibody

E10-30030

Background: ICAM1 is a 85-110 kDa single chain type 1 integral membrane glycoprotein with an extracellular domain of five immunoglobulin superfamily repeats, a transmembrane region and a cytoplasmic domain. It shares considerable amino acid sequence homology with ICAM3 and with ICAM2. ICAM1 is expressed by activated endothelial cells. It is detected on cells of many other lineages (e.g. epithelial cells, fibroblasts, chondrocytes, B lymphocytes, T lymphocytes (low), monocytes, macrophages, dendritic cells and neutrophils), with lower levels that increase in inflammation. ICAM1 is also detected in some carcinoma and melanoma cells. Soluble ICAM1 is detectable in the plasma and is elevated in patients with various inflammatory syndromes. It is the receptor for rhinoviruses and malaria.

Catalog Number: E10-30030

Amount: 100µg/100µl

Clone Number: 6G12

Species: Mouse IgG1

MW 57.8kDa

Aliases: BB2; CD54; P3.58; ICAM1

Entrez Gene: 3383

Immunogen: Purified recombinant fragment of human ICAM1(28-480aa) expressed in E. Coli.

Storage: Store at 4°C, for long term storage, store at -20°C.

Formulation: Ascitic fluid containing 0.03% sodium azide.

Species Reactivities: Human

Tested Applications: WB, ELISA. Not yet tested in other applications.

Application notes: WB: 1/500 - 1/2000,
ELISA: Propose dilution 1/10000.

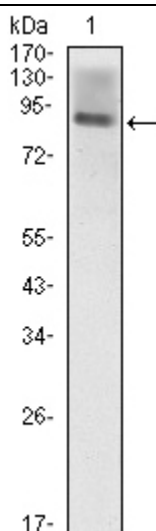


Figure 1: Western blot analysis using ICAM1 mouse mAb against ICAM1-hlgGfC transfected HEK293 (1) cell lysate.

For Research Use Only