



## SYP Mouse Monoclonal Antibody

E10-30032

**Background:** Synaptophysin (p38) is an integral membrane protein of small synaptic vesicles in brain and endocrine cells. Synaptophysin contains four transmembrane domains that form a hexameric channel or gap junction-like pore. Synaptophysin binds to the SNARE protein synaptobrevin/VAMP, which prevents the inclusion of synaptobrevin in the synaptic vesicle fusion complex and creates a pool of synaptobrevin for exocytosis when synapse activity increases. Synaptophysin is also responsible for targeting synaptobrevin 2/VAMP2 to synaptic vesicles, a critical component of the fusion complex.

**Catalog Number:** E10-30032

**Amount:** 100µg/100µl

**Clone Number:** 7H12

**Species:** Mouse IgG1

**MW** 33.8kDa

**Aliases:** MRXSYP; SYP

**Entrez Gene:** 6855

**Immunogen:** Purified recombinant fragment of SYP expressed in E. Coli.

**Storage:** Store at 4°C, for long term storage, store at -20°C.

**Formulation:** Ascitic fluid containing 0.03% sodium azide.

**Species Reactivities:** Human; Rat

**Tested Applications:** WB, IHC, ELISA. Not yet tested in other applications.

**Application notes:** WB: 1/500 - 1/2000, IHC: 1/200-1/1000, ELISA: Propose dilution 1/10000.

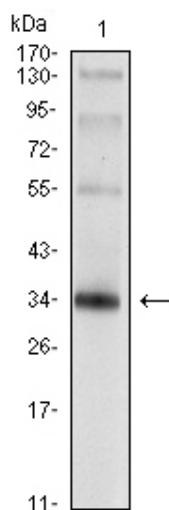


Figure 1: Western blot analysis using SYP mouse mAb against rat brain tissue lysate.

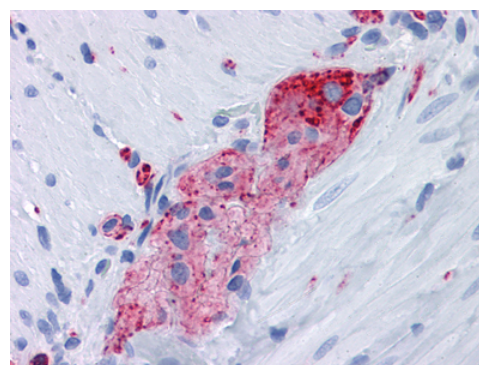


Figure 2: Immunohistochemical analysis of paraffin-embedded human Small Intestine, myenteric plexus tissues using anti-SYP mouse mAb