



## CDC2 Mouse Monoclonal Antibody

E10-30038

**Background:** The cell division control protein cdc2, also known as cyclin-dependent kinase 1 (Cdk1) or p34/cdk1, plays a key role in the control of the eukaryotic cell cycle, where it is required for entry into S-phase and mitosis. Cdc2 exists as a complex with both cyclin A and cyclin B. The best characterized of these associations is the Cdc2 p34 cyclin B complex, which is required for the G2 to M phase transition. Activation of Cdc2 is controlled at several steps including cyclin binding and phosphorylation of threonine 161. However, the critical regulatory step in activating cdc2 during progression into mitosis appears to be dephosphorylation of Tyr15 and Tyr14. Phosphorylation at Tyr15 and inhibition of Cdc2 is carried out by WEE1 and MIK protein kinases while Tyr15 dephosphorylation and activation of Cdc2 is carried out by the cdc25 phosphatase. The isoform CDC2deltaT is found in breast cancer tissues. Furthermore, cdc2/Cdk1 is a key mediator of neuronal cell death in brain development and degeneration.

**Catalog Number:** E10-30038

**Amount:** 100µg/100µl

**Clone Number:** 8C5A6

**Species:** Mouse IgG1

**MW** 34kDa

**Aliases:** CDC2; CDC28A; P34CDC2; MGC111195; DKFZp686L20222; CDK1

**Entrez Gene:** 983

**Immunogen:** Purified recombinant fragment of CDC2 expressed in E. Coli.

**Storage:** Store at 4°C, for long term storage, store at -20°C.

**Formulation:** Ascitic fluid containing 0.03% sodium azide.

**Species Reactivities:** Human

**Tested Applications:** WB, IHC, ELISA. Not yet tested in other applications.

**Application notes:** WB: 1/500 - 1/2000, IHC: 1/200-1/1000, ELISA: Propose dilution 1/10000.

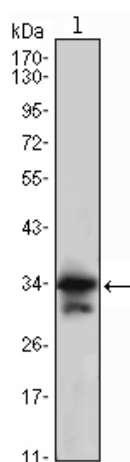


Figure 1: Western blot analysis using CDC2 mouse mAb against Jurkat (1) cell lysate.

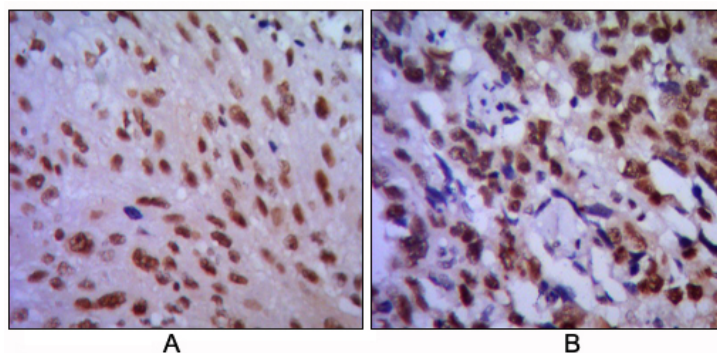


Figure 2: Immunohistochemical analysis of paraffin-embedded human lung cancer (A) and esophageal cancer (B), showing cytoplasmic localization using CDC2 mouse mAb with DAB staining.

**For Research Use Only**