



VCAM1 Mouse Monoclonal Antibody

E10-30045

Background: This gene is a member of the Ig superfamily and encodes a cell surface sialoglycoprotein expressed by cytokine-activated endothelium. This type I membrane protein mediates leukocyte-endothelial cell adhesion and signal transduction, and may play a role in the development of atherosclerosis and rheumatoid arthritis. Two alternatively spliced transcripts encoding different isoforms have been described for this gene. Tissue specificity: Expressed on inflamed vascular endothelium, as well as on macrophage-like and dendritic cell types in both normal and inflamed tissue. INVITROGEN: CD106 is expressed on bone marrow stromal cells, myeloid cells, and endothelial cells.

Catalog Number: E10-30045

Amount: 100µg/100µl

Clone Number: 6G9

Species: Mouse IgG1

MW 81kDa

Aliases: CD106; MGC99561; INCAM-100; DKFZp779G2333; VCAM1

Entrez Gene: 7412

Immunogen: Purified recombinant fragment of human VCAM1 expressed in E. Coli.

Storage: Store at 4°C, for long term storage, store at -20°C.

Formulation: Ascitic fluid containing 0.03% sodium azide.

Species Reactivities: Human

Tested Applications: WB, IHC, ELISA. Not yet tested in other applications.

Application notes: WB: 1/500 - 1/2000, IHC: 1/200-1/1000, ELISA: Propose dilution 1/10000.

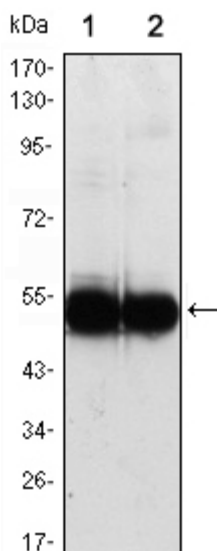


Figure 1: Western blot analysis using VCAM1 mouse mAb against HUVEC (1) and EC (2) cell lysate.

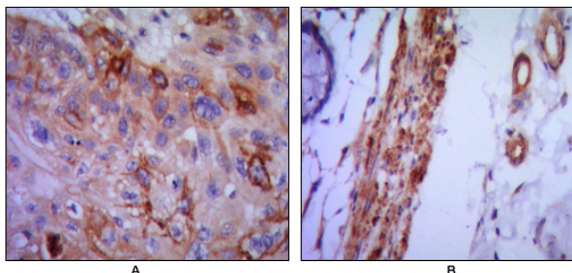


Figure 2: Immunohistochemical analysis of paraffin-embedded human lung cancer (A) and colon cancer (B) using VCAM1 mouse mAb with DAB staining.

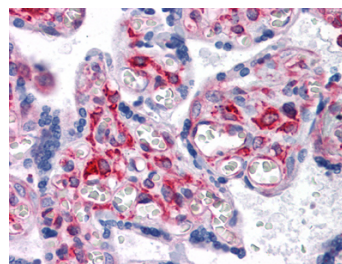


Figure 3: Immunohistochemical analysis of paraffin-embedded human Placenta tissues using VCAM1 mouse mAb

For Research Use Only