



GATA1 Mouse Monoclonal Antibody

E10-30047

- Background:** erythroid specific transcription factor, GATA sequence binding protein (same as EryF1, NF-E1, EF-1, EF gamma-a, GF1), expressed in RBC, mast cell, megakaryocyte, hematopoietic progenitor cell, testis, associated with a special class of nuclear bodies, activated by erythropoietin, inactivated by coactivation of DEATH receptors (TNFRSF6) mediated caspase cleavage Tissue specificity: Erythrocytes
- Catalog Number:** E10-30047
- Amount:** 100µg/100µl
- Clone Number:** 4F5
- Species:** Mouse IgG1
- MW** 42.7
- Aliases:** GF1; GF-1; NFE1; XLTT; ERYF1; GATA-1; GATA1
- Entrez Gene:** 2623
- Immunogen:** Purified recombinant fragment of human VCAM1 expressed in E. Coli.
- Storage:** Store at 4°C, for long term storage, store at -20°C.
- Formulation:** Ascitic fluid containing 0.03% sodium azide.
- Species Reactivities:** Human
- Tested Applications:** WB, IHC, IF, ELISA. Not yet tested in other applications.
- Application notes:** WB: 1/500 - 1/2000, IHC: 1/200-1/1000, IF: 1/200-1/1000, ELISA: Propose dilution 1/10000.

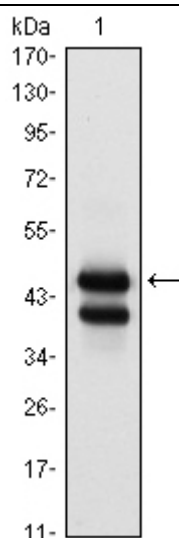


Figure 1: Western blot analysis using GATA1 mouse mAb against K562 (1) cell lysate.

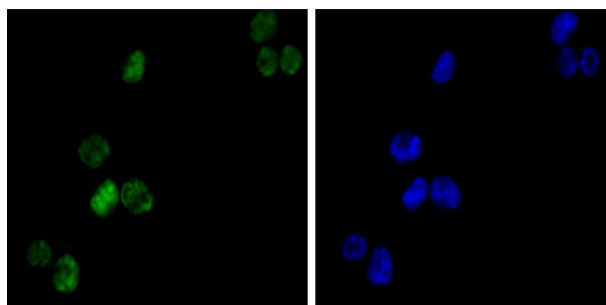


Figure 2: Immunofluorescence analysis of K562 (left) cells using GATA1 mouse mAb (green). Blue: DRAQ5 fluorescent DNA dye.

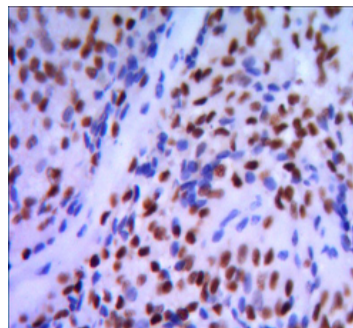


Figure 3: Immunohistochemical analysis of paraffin-embedded pancreatic cancer, using GATA1 mouse mAb with DAB staining.

For Research Use Only