



ALPP Mouse Monoclonal Antibody

E10-30061

Background: There are at least four distinct but related alkaline phosphatases: intestinal, placental, placental-like, and liver/bone/kidney (tissue non-specific). The first three are located together on chromosome 2 while the tissue non-specific form is located on chromosome 1. The product of this gene is a membrane bound glycosylated enzyme, also referred to as the heat stable form, that is expressed primarily in the placenta although it is closely related to the intestinal form of the enzyme as well as to the placental-like form. The coding sequence for this form of alkaline phosphatase is unique in that the 3' untranslated region contains multiple copies of an Alu family repeat. In addition, this gene is polymorphic and three common alleles (type 1, type 2 and type 3) for this form of alkaline phosphatase have been well characterized.

Catalog Number: E10-30061

Amount: 100µg/100µl

Clone Number: 3E5

Species: Mouse IgG1

MW: 58kDa

Aliases: ALP; PALP; PLAP; FLJ61142; ALPP

Entrez Gene: 250

Immunogen: Purified recombinant fragment of human ALPP expressed in E. Coli.

Storage: Store at 4°C, for long term storage, store at -20°C.

Formulation: Ascitic fluid containing 0.03% sodium azide.

Species Reactivities: Human

Tested Applications: WB, IHC, ELISA. Not yet tested in other applications.

Application notes: WB: 1/500 - 1/2000, IHC: 1/200-1/1000, ELISA: Propose dilution 1/10000.

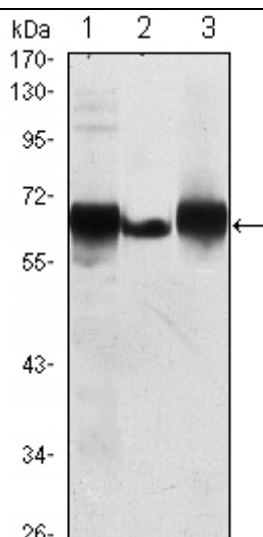


Figure 1: Western blot analysis using ALPP mouse mAb against HepG2 (1), A431 (2) and MCF-7 (3) cell lysate.

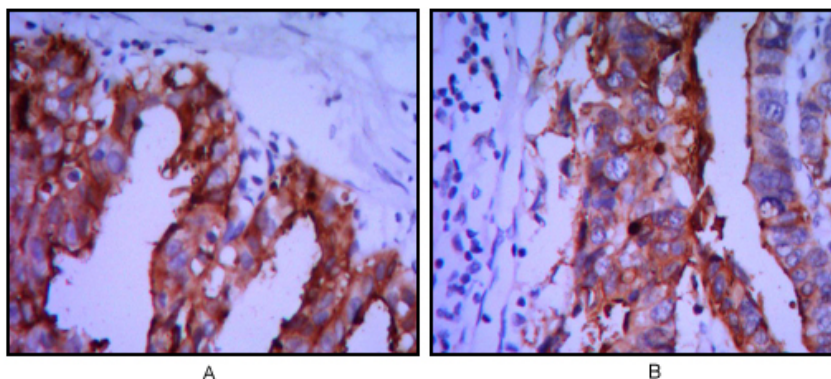


Figure 2: Immunohistochemical analysis of paraffin-embedded ovarian cancer (A), stomach cancer (B) using ALPP mouse mAb with DAB staining.

For Research Use Only